

 LED Flexi Magnum Plus Die-Cast Aluminium Housing Series

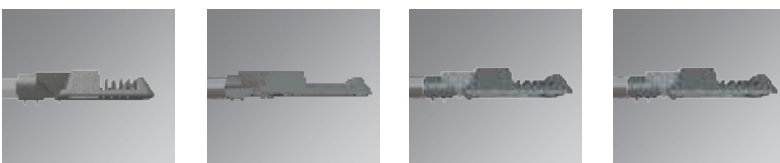
SMART CITIES!
Stand Alone Automation System
Or
IoT Technologies
Make your city SMARTER!

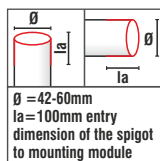
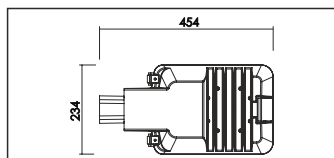
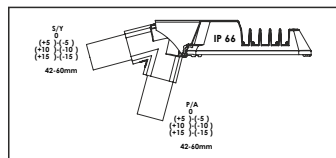
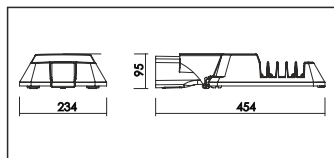


LED Flexi Magnum Plus

Mini CL2030 - Micro CL2030A - Midi CL2040 - Macro CL2040A

 Eco Gold Lumen Package  Performance Platinum Lumen Package





Description

Features

- Mounting module is fixed to any post top or side entry spigot from 42 to 60ø mm.
- Optional 76ø mm spigot.
- Dustproof and jetproof to IP66.
- Quick, easy and safe installation.
- Complies with Me/Ce/S road lighting standards EN13201.
- Special designed optics maximizes the distance between poles.
- High quality LED modules from approved international suppliers.
- Thermal-protected, voltage regulated drivers.
- Class I (standard) or class II (optional).
- Low CO₂ emission.
- 14 adjustable tilt angles; 0, ±5, ±10, ±15 for side entry 0, ±5, ±10, ±15 for post top.
- Two different tempered glass mounting options; capsule mounting system or hinged openable system.
- Choice of any RAL colour on request.
- Standart RAL 9007.
- Low service and maintenance costs.
- Maximized energy savings.
- The die -cast aluminium body and high quality materials ensure durability.
- Vandal proof and vibration proof.
- The latest led solution for outdoor lighting.
- The right lighting performance for project requirements.
- Maximum 16 high power white LEDs.
- Available in three different colour rendering index. CRI > 70 (standard), CRI > 80 (optional) or CRI > 90 (optional)
- Easy connect system provides tool-free electrical connection.
- Effective thermal management.
- More light output and service life.
- High energy saving potential.
- The original aesthetic design.
- Available in seven different colour temperatures; 2700K (warm white) 3000K (warm white), 4000K (natural white), 5000K (cool white), 5700K (cool white), 6000K (cool white), 6500K (cool white)
- Good lighting uniformity.
- Mercury free.
- Sharp profile.
- Fully complies RoHS requirements.
- Recyclable raw materials.

Driver features;

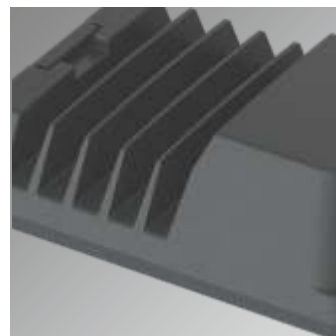
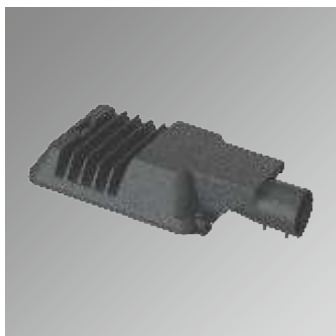
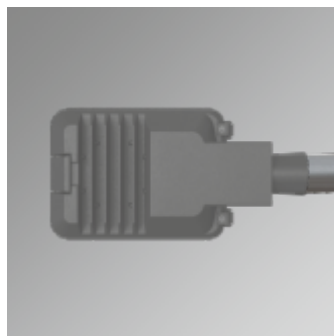
- Constant current.
- Harmonic filter protection.
- Short circuit protection and thermal protection integration.

Materials

- Canopy; polyester powder painted non-corrosive high-pressure die-cast aluminium.
- Refractor; tempered 5mm flat glass, easy replaceable.
- Pole mounting module; non-corrosive die-cast aluminium.
- Clips; aluminium clips with stainless steel spring.
- Gasket; silicon.
- Bolt and nuts; stainless steel.
- Pole mounting bolt; hex socket (4 hex key wrenches) or bolt (13 wrenches) stainless steel.
- Pole mounting bolt; 2 items.

Applications

- Highways
- Secondary roads
- Residential areas
- Parks
- Car parks
- Environment and security lighting
- Industrial areas
- Roundabouts
- Street and avenue

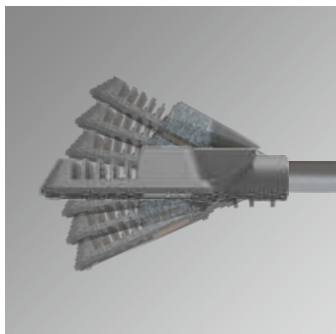


Flexi Magnum Plus Mini CL2030

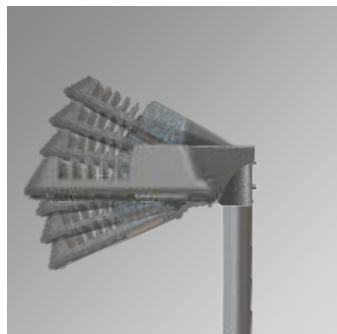
LED Die-Cast Aluminium Housing



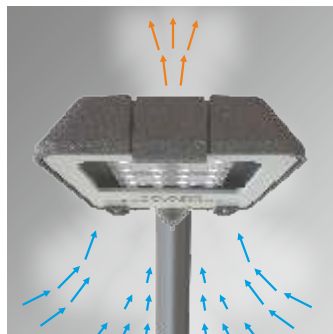
Side Entry 0°/±5°/±10°/±15°



Post Top 0°/±5°/±10°/±15°

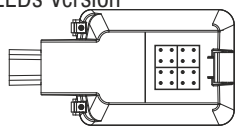


Efficient Cooling System



LED Configuration

16 LEDs Version



Technical Data

- 220-240V AC 50/60 Hz ECG
- Pg 20x1,5 thread
- Dimensions: 234x454x95mm
- Power factor ≥ 0.95
- CRI ≥ 70 (Standard)

Standards

- CE, TSE, GOST, RoHS, ENEC, VDE, EN60598-2-3.
- EN62471 Photo biological safety of lamps and lamp systems.
- EN62031 LED modules for general lighting-safety specifications.



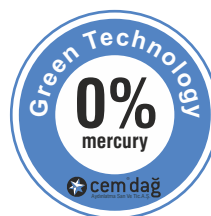
CELVIN CHART



CRI

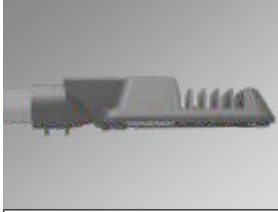


Glare-Free Optic Lens Design For Visual Comfort



Flexi Magnum Plus Mini CL2030

LED Die-Cast Aluminium Housing



Road Luminaires

LED Flexi Magnum Plus Mini CL2030 Die-Cast Aluminium Housing

IP66 / IK10 / 4000K (Standard) / RAL 9007 / CL1. Class 1 (Standard) / CRI>70 (Standard)



	W (mm)	L (mm)	h (mm)	Item /Box	Average Weight (kg)	Order Code	
16/~16W 350mA	234	454	95	1	4.00	L2030-LED016NW-ECG	
16/~24W 500mA	234	454	95	1	4.00	L2030-LED024NW-ECG	
16/~30W 600mA	234	454	95	1	4.00	L2030-LED030NW-ECG	
16/~35W 700mA	234	454	95	1	4.00	L2030-LED035NW-ECG	
16/~40W 800mA	234	454	95	1	4.00	L2030-LED040NW-ECG	
16/~50W 925mA	234	454	95	1	4.00	L2030-LED050NW-ECG	
16/~60W 1050mA	234	454	95	1	4.00	L2030-LED060NW-ECG	

Option Code

-RO. RAL 9007 (Standard)	-CW. Colour Temperature 6500K	-CR7. CRI>70 (Standard)	-COL.1030 (Standard)
-RO. RAL 7047	-CW. Colour Temperature 6000K	-CR8. CRI>80 (Optional)	
-RO. RAL 7021 (Metalic)	-CW. Colour Temperature 5700K	-CR9. CRI>90 (Optional)	
-DIM.0-10V or 1-10V Dimmable Electronic Driver	-CW. Colour Temperature 5000K	-CL1. Class 1 (Standard)	
-ONE. Stand Alone Automation	-NW. Colour Temperature 4000K (Standard)	-CL2. Class 2 (Optional)	
-DAL. DALI Electronic Driver	-WW. Colour Temperature 3000K	-EG. Eco Gold Lumen Package (Standard)	
-IoT. Internet of Things Automation	-WW. Colour Temperature 2700K	-PP. Performance Platinum Lumen Package (Optional)	
-MDBA. Wall Console (Accessories)	-OP. Open System	-SK. Protection Case	

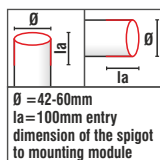
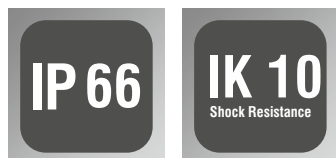
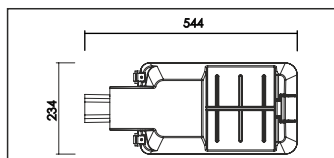
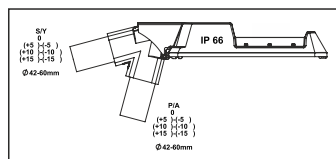
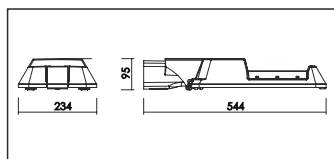
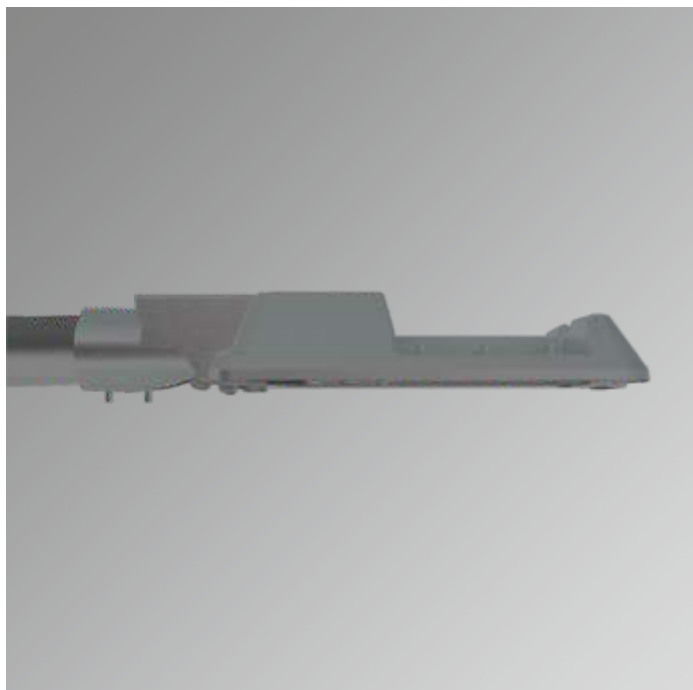
According to your preference, please add the **Option Code** at the end of the **Order Code**
 Lumens are minimum 115 lm/W maximum 145 lm/W depends on currents and LED quantities.

Standard lens is COL1030. According to your preference, please add the **Optional Lens Code** at the end of the **Order Code**. To see other lens options please see COL options page



Flexi Magnum Plus Micro CL2030A

LED Die-Cast Aluminium Housing



Description

Features

- Mounting module is fixed to any post top or side entry spigot from 42 to 60mm.
- Optional 76mm spigot.
- Dustproof and jetproof to IP66.
- Quick, easy and safe installation.
- Complies with Me/Ce/S road lighting standards EN13201.
- Special designed optics maximizes the distance between poles.
- High quality LED modules from approved international suppliers.
- Thermal-protected, voltage regulated drivers.
- Class I (standard) or class II (optional).
- Low CO₂ emission.
- 14 adjustable tilt angles; 0, ±5, ±10, ±15 for side entry 0, ±5, ±10, ±15 for post top.
- Two different tempered glass mounting options; capsule mounting system or hinged openable system.
- Choice of any RAL colour on request.
- Standart RAL 9007.
- Low service and maintenance costs.
- Maximized energy savings.
- The die-cast aluminium body and high quality materials ensure durability.
- Vandal proof and vibration proof.
- The latest led solution for outdoor lighting.
- The right lighting performance for project requirements.
- Available in three different colour rendering index. CRI > 70 (standard), CRI > 80 (optional) or CRI > 90 (optional)
- Easy connect system provides tool-free electrical connection.
- Effective thermal management.
- More light output and service life.
- High energy saving potential.
- The original aesthetic design.
- Maximum 24 high power white LEDs.
- Available in seven different colour temperatures; 2700K (warm white), 3000K (warm white), 4000K (natural white), 5000K (cool white), 5700K (cool white), 6000K (cool white), 6500K (cool white)
- Good lighting uniformity.
- Mercury free.
- Sharp profile.
- Fully complies RoHS requirements.
- Recyclable raw materials.

Driver features;

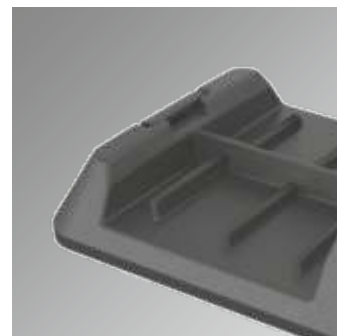
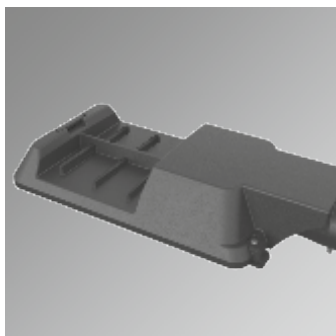
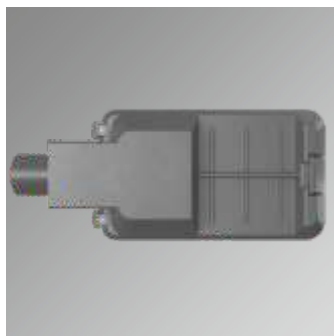
- Constant current.
- Harmonic filter protection.
- Short circuit protection and thermal protection integration.

Materials

- Canopy; polyester powder painted non-corrosive high-pressure die-cast aluminium.
- Refractor; tempered 5mm flat glass, easy replaceable.
- Pole mounting module; non-corrosive die-cast aluminium.
- Clips; aluminium clips with stainless steel spring.
- Gasket; silicon.
- Bolt and nuts; stainless steel.
- Pole mounting bolt; hex socket (4 hex key wrenches) or bolt (13 wrenches) stainless steel.
- Pole mounting bolt; 2 items.

Applications

- Highways
- Secondary roads
- Residential areas
- Parks
- Car parks
- Environment and security lighting
- Industrial areas
- Roundabouts
- Street and avenue



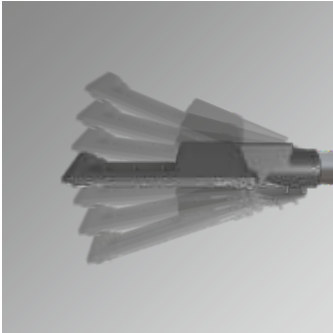


Flexi Magnum Plus Micro CL2030A

Die-Cast Aluminium Housing



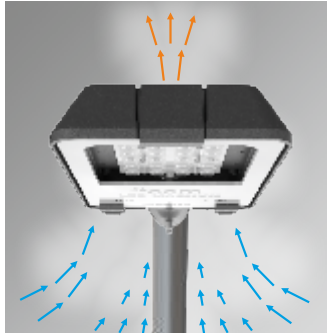
Side Entry 0°/±5°/±10°/±15°



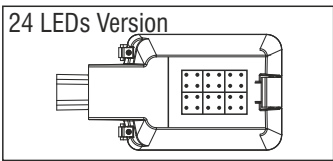
Post Top 0°/±5°/±10°/±15°



Efficient Cooling System



LED Configuration

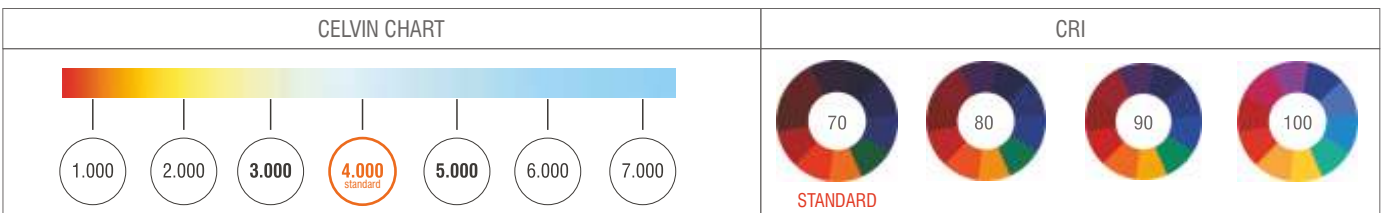
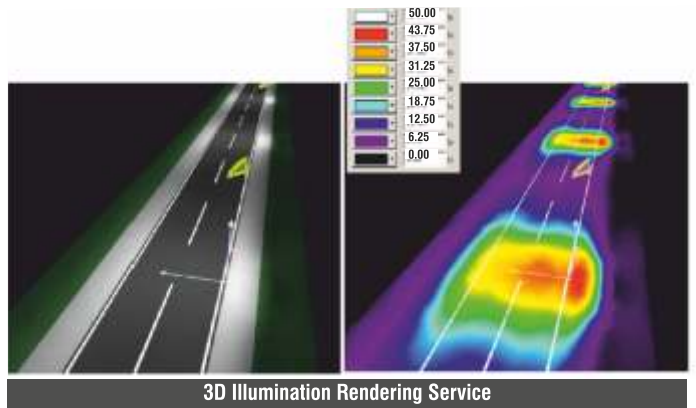


Technical Data

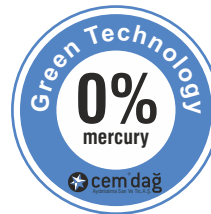
- 220-240V AC 50/60 Hz ECG
- Pg 20x1,5 thread
- Dimensions: 234x454x95mm
- Power factor ≥ 0.95
- CRI ≥ 70 (Standard)

Standards

- CE, TSE, GOST, RoHS, ENEC, VDE, EN60598-2-3.
- EN62471 Photo biological safety of lamps and lamp systems.
- EN62031 LED modules for general lighting-safety specifications.



Glare-Free Optic Lens Design For Visual Comfort



Flexi Magnum Plus Micro CL2030A

LED Die-Cast Aluminium Housing



Road Luminaires

LED Flexi Magnum Plus Micro CL2030A Die-Cast Aluminium Housing

IP66 / IK10 / 4000K (Standard) / RAL 9007 / CL1. Class 1 (Standard) / CRI>70 (Standard)

	W (mm)	L (mm)	h (mm)	Item /Box	Average Weight (kg)	Order Code
24/~55W 700mA	234	544	95	1	4.80	L2030A-LED055WNW-ECG
24/~65W 800mA	234	544	95	1	4.90	L2030A-LED065WNW-ECG
24/~70W 925mA	234	544	95	1	4.90	L2030A-LED070WNW-ECG
24/~80W 1050mA	234	544	95	1	4.90	L2030A-LED080WNW-ECG

Option Code

-RO. RAL 9007 (Standard)	-CW. Colour Temperature 6500K	-CR7. CRI>70 (Standard)	-COL.1030 (Standard)
-RO. RAL 7047	-CW. Colour Temperature 6000K	-CR8. CRI>80 (Optional)	
-RO. RAL 7021 (Metalic)	-CW. Colour Temperature 5700K	-CR9. CRI>90 (Optional)	
-DIM.0-10V or 1-10V Dimmable Electronic Driver	-CW. Colour Temperature 5000K	-CL1. Class 1 (Standard)	
-ONE. Stand Alone Automation	-NW. Colour Temperature 4000K (Standard)	-CL2. Class 2 (Optional)	
-DAL. DALI Electronic Driver	-WW. Colour Temperature 3000K	-EG. Eco Gold Lumen Package (Standard)	
-IoT. Internet of Things Automation	-WW. Colour Temperature 2700K	-PP. Performance Platinum Lumen Package (Optional)	
-MDBA. Wall Console (Accessories)	-OP. Open System	-SK. Protection Case	

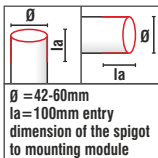
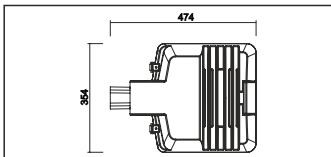
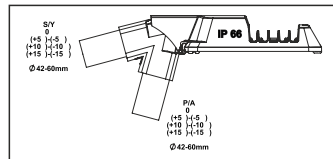
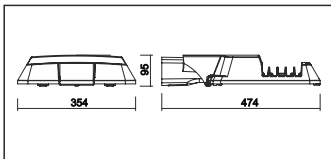
According to your preference, please add the **Option Code** at the end of the **Order Code**
 Lumens are minimum 115 lm/W maximum 145 lm/W depends on currents and LED quantities.

Standard lens is COL1030. According to your preference, please add the **Optional Lens Code** at the end of the **Order Code**. To see other lens options please see COL options page



Flexi Magnum Plus Midi CL2040

LED Die-Cast Aluminium Housing



Ø = 42-60mm
la = 100mm entry
dimension of the spigot
to mounting module

Description

Features

- Mounting module is fixed to any post top or side entry spigot from 42 to 60mm.
- Optional 76mm spigot.
- Dustproof and jetproof to IP66.
- Quick, easy and safe installation.
- Complies with Me/Ce/S road lighting standards EN13201.
- Special designed optics maximizes the distance between poles.
- High quality LED modules from approved international suppliers.
- Luminaire lifetime is 50000 hours.
- Thermal-protected, voltage regulated drivers.
- Class I (standard) or class II (optional).
- Low CO₂ emission.
- 14 adjustable tilt angles; 0, ±5, ±10, ±15 for side entry 0, ±5, ±10, ±15 for post top.
- Two different tempered glass mounting options; capsule mounting system or hinged openable system.
- Choice of any RAL colour on request.
- Standard RAL 9007.
- Low service and maintenance costs.
- Maximized energy savings.
- The die -cast aluminium body and high quality materials ensure durability.
- Vandal proof and vibration proof.
- The latest led solution for outdoor lighting.
- The right lighting performance for project requirements.
- Available in three different colour rendering index. CRI > 70 (standard), CRI > 80 (optional) or CRI > 90 (optional)
- Easy connect system provides tool-free electrical connection.
- Effective thermal management.
- More light output and service life.
- High energy saving potential.
- The original aesthetic design.
- Max.32 high power white LEDs.
- Available in seven different colour temperatures; 2700K (warm white), 3000K (warm white), 4000K (natural white), 5000K (cool white), 5700K (cool white), 6000K (cool white), 6500K (cool white)
- Good lighting uniformity.
- Mercury free.
- Sharp profile.
- Fully complies RoHS requirements.
- Recyclable ♻️ raw materials.

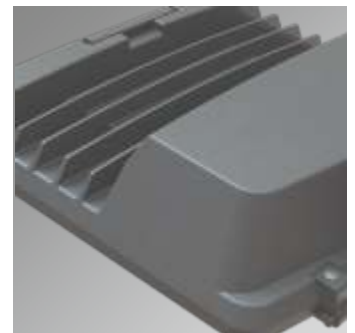
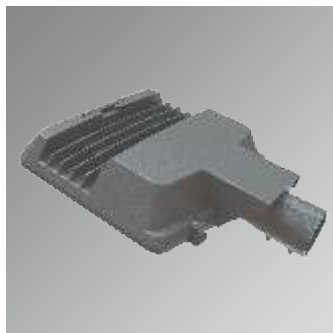
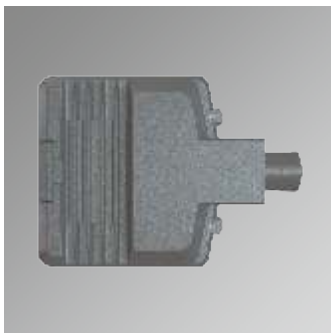
- Driver features;
- Constant current.
 - Harmonic filter protection.
 - Short circuit protection and thermal protection integration.

Materials

- Canopy; polyester powder painted non-corrosive high-pressure die-cast aluminium.
- Refractor; tempered 5mm flat glass, easy replaceable.
- Pole mounting module; non-corrosive die-cast aluminium.
- Clips; aluminium clips with stainless steel spring.
- Gasket; silicon.
- Bolt and nuts; stainless steel.
- Pole mounting bolt; hex socket (4 hex key wrenches) or bolt (13 wrenches) stainless steel.
- Pole mounting bolt; 2 item.

Applications

- Highways
- Secondary roads
- Residential areas
- Parks
- Car parks
- Environment and security lighting
- Industrial areas
- Roundabouts
- Street and avenue



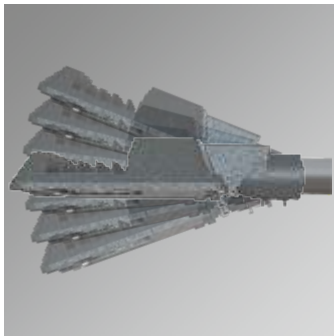


Flexi Magnum Plus Midi CL2040

LED Die-Cast Aluminium Housing



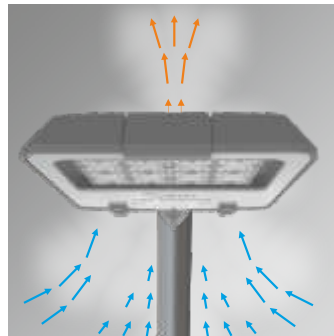
Side Entry 0°/±5°/±10°/±15°



Post Top 0°/±5°/±10°/±15°

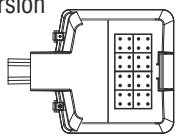


Efficient Cooling System



LED Configuration

32 LEDs Version

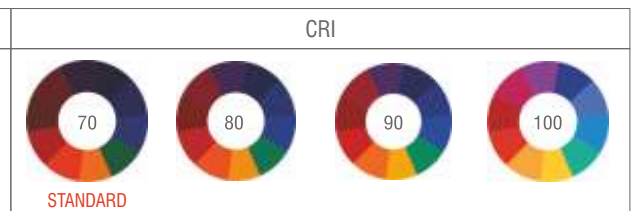
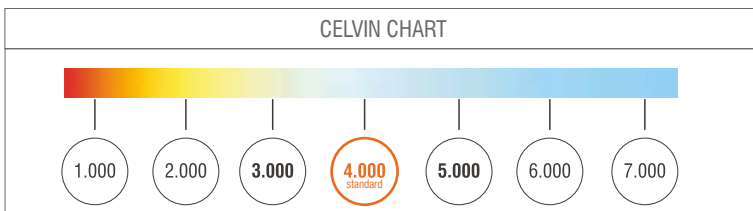
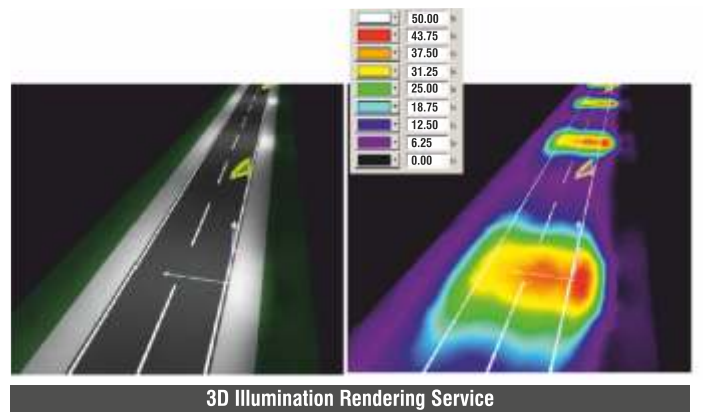


Technical Data

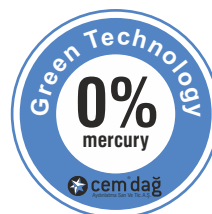
- 220-240V AC 50/60 Hz ECG
- Pg 20x1,5 thread
- Dimensions: 354x474x95mm
- Power factor ≥ 0.95
- CRI ≥ 70 (Standard)

Standards

- CE, TSE, GOST, RoHS, ENEC, TUV VDE, EN60598-2-3.
- EN62471 Photo biological safety of lamps and lamp systems.
- EN62031 LED modules for general lighting-safety specifications.

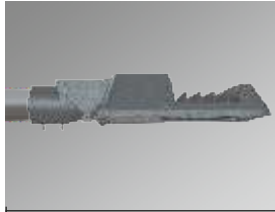


Glare-Free Optic Lens Design For Visual Comfort



Flexi Magnum Plus Midi CL2040

LED Die-Cast Aluminium Housing



Road Luminaires

LED Flexi Magnum Plus Midi CL2040 Die-Cast Aluminium Housing

IP66 / IK10 / 4000K (Standard) / RAL 9007 / CL1, Class 1 (Standard) / CRI>70 (Standard)



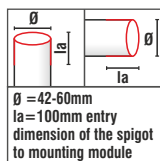
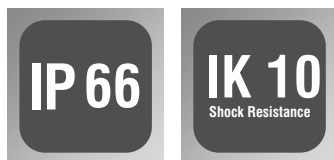
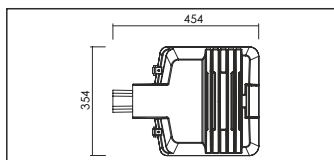
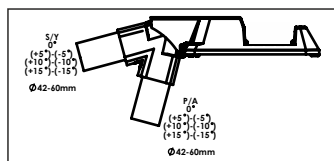
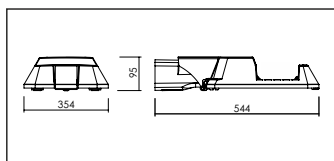
	W (mm)	L (mm)	h (mm)	Item /Box	Average Weight (kg)	Order Code	
32/~62W/ 600mA	354	474	95	1	6.00	L2040-LED062NW-ECG	
32/~72W/ 700mA	354	474	95	1	6.00	L2040-LED072NW-ECG	
32/~82W/ 800mA	354	474	95	1	6.30	L2040-LED082NW-ECG	
32/~100W/ 925mA	354	474	95	1	6.30	L2040-LED100NW-ECG	
32/~110W/1050mA	354	474	95	1	6.30	L2040-LED110NW-ECG	

Option Code

-RO. RAL 9007 (Standard)	-CW. Colour Temperature 6500K	-CR7. CRI>70 (Standard)	-COL.1030 (Standard)
-RO. RAL 7047	-CW. Colour Temperature 6000K	-CR8. CRI>80 (Optional)	
-RO. RAL 7021 (Metalic)	-CW. Colour Temperature 5700K	-CR9. CRI>90 (Optional)	
-DIM.0-10V or 1-10V Dimmable Electronic Driver	-CW. Colour Temperature 5000K	-CL1. Class 1 (Standard)	
-ONE. Stand Alone Automation	-NW. Colour Temperature 4000K (Standard)	-CL2. Class 2 (Optional)	
-DAL. DALI Electronic Driver	-WW. Colour Temperature 3000K	-EG. Eco Gold Lumen Package (Standard)	
-IoT. Internet of Things Automation	-WW. Colour Temperature 2700K	-PP. Performance Platinum Lumen Package (Optional)	
-MDBA. Wall Console (Accessories)	-OP. Open System	-SK. Protection Case	

According to your preference, please add the **Option Code** at the end of the **Order Code**
 Lumens are minimum 115 lm/W maximum 145 lm/W depends on currents and LED quantities.

Standard lens is COL1030. According to your preference, please add the **Optional Lens Code** at the end of the **Order Code**. To see other lens options please see COL options page



Description

Features

- Mounting module is fixed to any post top or side entry spigot from 42 to 60 \varnothing mm.
- Optional 76 \varnothing mm spigot.
- Dustproof and jetproof to IP66.
- Quick, easy and safe installation.
- Complies with Me/Ce/S road lighting standards EN13201.
- Special designed optics maximizes the distance between poles.
- High quality LED modules from approved international suppliers.
- Thermal-protected, voltage regulated drivers.
- Class I (standard) or class II (optional).
- Low CO₂ emission.
- 14 adjustable tilt angles; 0, ± 5 , ± 10 , ± 15 for side entry 0, ± 5 , ± 10 , ± 15 for post top.
- Two different tempered glass mounting options; capsule mounting system or hinged openable system.
- Choice of any RAL colour on request.
- Standart RAL 9007.
- Low service and maintenance costs.
- Maximized energy savings.
- The die -cast aluminium body and high quality materials ensure durability.
- Vandal proof and vibration proof.
- The latest led solution for outdoor lighting.
- The right lighting performance for project requirements.
- Available in three different colour rendering index. CRI > 70 (standard), CRI > 80 (optional) or CRI > 90 (optional)
- Easy connect system provides tool-free electrical connection.
- Effective thermal management.
- More light output and service life.
- High energy saving potential.
- The original aesthetic design.
- Max.48 high power white LEDs.
- Available in seven different colour temperatures. 2700K (warm white), 3000K (warm white), 4000K (natural white), 5000K (cool white), 5700K (cool white), 6000K (cool white), 6500K (cool white).
- Good lighting uniformity.
- Mercury free.
- Sharp profile.
- Fully complies RoHS requirements.
- Recyclable raw materials.

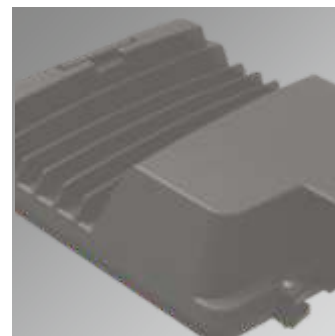
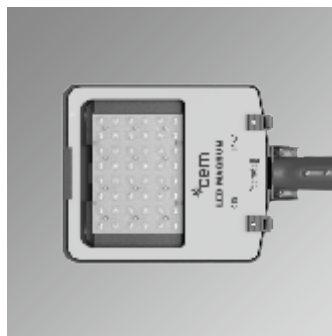
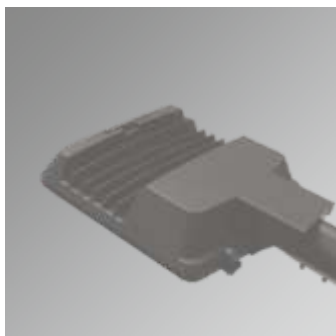
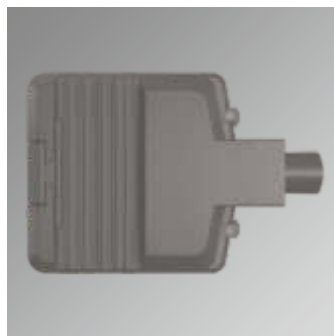
- Driver features;
- Constant current.
 - Harmonic filter protection.
 - Short circuit protection and thermal protection integration.

Materials

- Canopy; polyester powder painted non-corrosive high-pressure die-cast aluminium.
- Refractor; tempered 5mm flat glass, easy replaceable.
- Pole mounting module; non-corrosive die-cast aluminium.
- Clips; aluminium clips with stainless steel spring.
- Gasket; silicon.
- Bolt and nuts; stainless steel.
- Pole mounting bolt; hex socket (4 hex key wrenches) or bolt (13 wrenches) stainless steel.
- Pole mounting bolt; 2 items.

Applications

- Highways
- Secondary roads
- Residential areas
- Parks
- Car parks
- Environment and security lighting
- Industrial areas
- Roundabouts
- Street and avenue



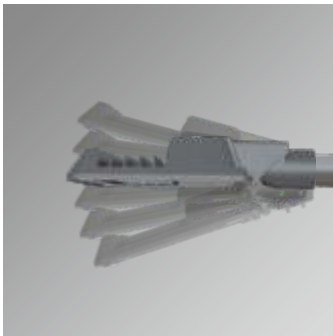


Flexi Magnum Plus Macro CL2040A

Die-Cast Aluminium Housing



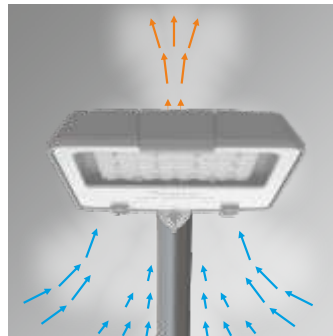
Side Entry 0°/±5°/±10°/±15°



Post Top 0°/±5°/±10°/±15°

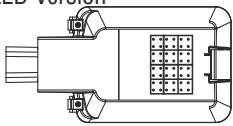


Efficient Cooling System



LED Configuration

48 LED Version

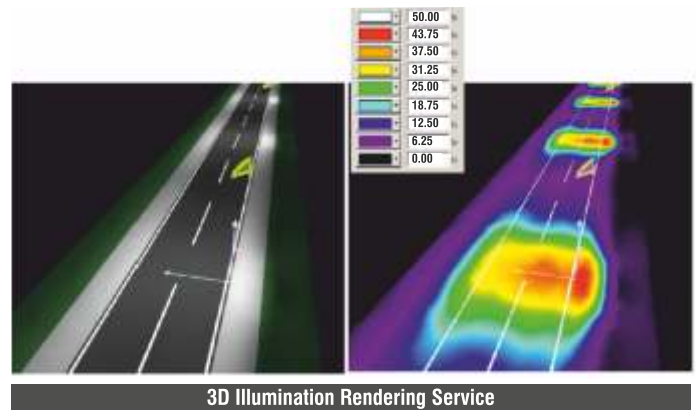


Technical Data

- 220-240V AC 50/60 Hz ECG
- Pg 20x1,5 thread
- Dimensions: 354x544x90mm
- Power factor ≥ 0.95
- CRI ≥ 70 (Standard)

Standards

- CE, TSE, GOST, RoHS, ENEC, TUV VDE, EN60598-2-3.
- EN62471 Photo biological safety of lamps and lamp systems.
- EN62031 LED modules for general lighting-safety specifications.



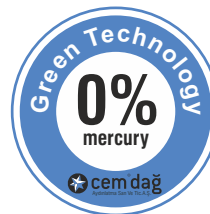
CELVIN CHART



CRI



Glare-Free Optic Lens Design For Visual Comfort



Flexi Magnum Plus Macro CL2040A

LED Die-Cast Aluminium Housing



Road Luminaires

LED Flexi Magnum Plus Macro CL2040A Die-Cast Aluminium Housing

IP66 / IK10 / 4000K (Standard) / RAL 9007 / CL1. Class 1 (Standard) / CRI>70 (Standard)



	W (mm)	L (mm)	h (mm)	Item /Box	Average Weight (kg)	Order Code	
48/~90W 600mA	354	544	95	1	6.60	L2040A-LED090NW-ECG	
48/~110W 700mA	354	544	95	1	6.60	L2040A-LED110NW-ECG	
48/~120W 800mA	354	544	95	1	6.60	L2040A-LED120NW-ECG	
48/~155W 925mA	354	544	95	1	6.60	L2040A-LED155NW-ECG	
48/~165W 1050mA	354	544	95	1	6.60	L2040A-LED165NW-ECG	

Option Code

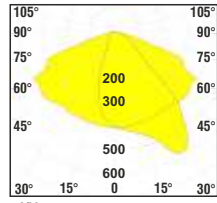
-RO. RAL 9007 (Standard)	-CW. Colour Temperature 6500K	-CR7. CRI>70 (Standard)	-COL.1030 (Standard)
-RO. RAL 7047	-CW. Colour Temperature 6000K	-CR8. CRI>80 (Optional)	
-RO. RAL 7021 (Metalic)	-CW. Colour Temperature 5700K	-CR9. CRI>90 (Optional)	
-DIM.0-10V or 1-10V Dimmable Electronic Driver	-CW. Colour Temperature 5000K	-CL1. Class 1 (Standard)	
-ONE. Stand Alone Automation	-NW. Colour Temperature 4000K (Standard)	-CL2. Class 2 (Optional)	
-DAL. DALI Electronic Driver	-WW. Colour Temperature 3000K	-EG. Eco Gold Lumen Package (Standard)	
-IoT. Internet of Things Automation	-WW. Colour Temperature 2700K	-PP. Performance Platinum Lumen Package (Optional)	
-MDBA. Wall Console (Accessories)	-OP. Open System	-SK. Protection Case	

According to your preference, please add the **Option Code** at the end of the **Order Code**
Lumens are minimum 115 lm/W maximum 145 lm/W depends on currents and LED quantities.

Standard lens is COL1030. According to your preference, please add the **Optional Lens Code** at the end of the **Order Code**. To see other lens options please see COL options page

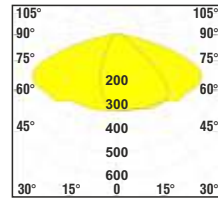
LENS CODES OPTIONS

COL1010



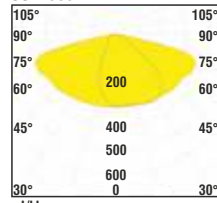
cd/klm
—C0-C180 —C90-C270

COL1020



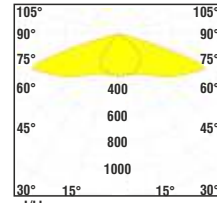
cd/klm
—C0-C180 —C90-C270

COL1030



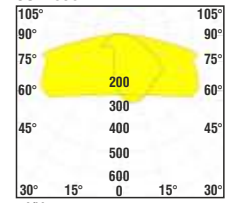
cd/klm
—C0-C180 —C90-C270

COL1040



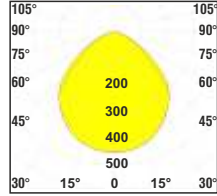
cd/klm
—C0-C180 —C90-C270

COL1650



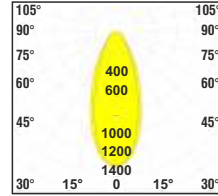
cd/klm
—C0-C180 —C90-C270

COL1530



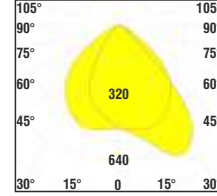
cd/klm
—C0-C180 —C90-C270

COL1540



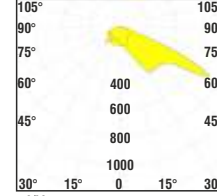
cd/klm
—C0-C180 —C90-C270

COL1550



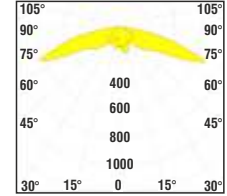
cd/klm
—C0-C180 —C90-C270

COL1630



cd/klm
—C0-C180 —C90-C270

COL1660



cd/klm
—C0-C180 —C90-C270



 **cem**[®]

Waterproof Luminaires



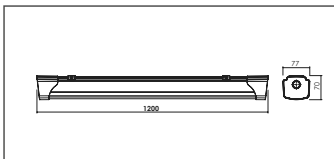
LED Extreme Series



SMART INDUSTRIES!
Stand Alone Automation System
Or
IoT Technologies
Make your facility SMARTER!

LED Extreme
CL2222





IK 08
Shock Resistance

IP65

Description

Features

- Water and dust resistance.
- Capsule mounting system.
- Shadeless and homogenous light output by using incomparable micron LED technology.
- Impact protected.
- Innovative concept.
- High performance.
- Fully complies with RoHS requirements.
- Easy mounting clips.
- Recyclable ♻️ raw materials.

Applications

- Dust and moisture industries
- Warehouses
- Chemical industries
- Sheet steel.
- Plants
- Garages
- Tunnels
- Train and subway stations
- Shipyards
- Greenhouses
- Textile factories

Materials

- Housing; polycarbonate(PC).
- Gasket; silicon.
- Reflector; high quality powder painted high quality sheet steel.
- Spring; steel spring.
- Connection; suspension system and adjustable screw.

Technical Data

- 220-240V AC 50/60 Hz EGG
- Pg 9 thread
- Dimensions: 77x600x70mm
77x1200x70mm
77x1500x70mm

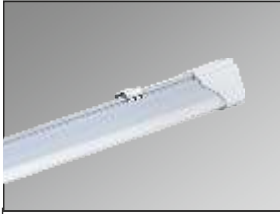
Standards

- CE, TSE, GOST, RoHS, ENEC, EN60598-2-1





Products of Cemdag are Made in European Union Custom Union and Declaration of Conformity complies fully with CE Standards.



Waterproof Luminaires
LED Extreme CL2222
IP66 / IK08

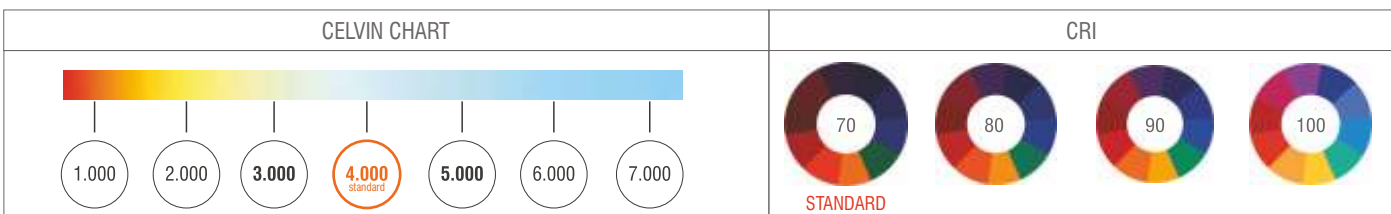


	W (mm)	L (mm)	h (mm)	Item /Box	Weight (kg)	Order Code
20W	77	600	70	1	1.00	L2222-LED020NW-ECG
30W	77	600	70	1	1.00	L2222-LED030NW-ECG
36W	77	600	70	1	1.00	L2222-LED036NW-ECG
30W	77	1200	70	1	1.30	L2222-LED130NW-ECG
36W	77	1200	70	1	1.30	L2222-LED136NW-ECG
42W	77	1200	70	1	1.30	L2222-LED042NW-ECG
55W	77	1200	70	1	2.00	L2222-LED055NW-ECG
55W	77	1500	70	1	2.50	L2222-LED155NW-ECG
60W	77	1500	70	1	2.50	L2222-LED060NW-ECG
70W	77	1500	70	1	2.50	L2222-LED070NW-ECG
80W	77	1500	70	1	2.50	L2222-LED080NW-ECG
90W	77	1500	70	1	2.50	L2222-LED090NW-ECG

Optional Code

-WW. Colour Temperatures 3000K	-EL1. Emergency Battery 1 Hour
-NW. Colour Temperatures 4000K (Standard)	-EL3. Emergency Battery 3 Hours
-CW. Colour Temperatures 5000K	
-CW. Colour Temperatures 6500K	

According to your preference, please add the **Option Code** at the end of the **Order Code**



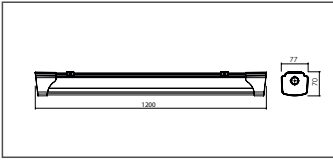


 **cem**[®]





Extreme CL2222 Waterproof Luminaire



Description

Features

- Dustproof and jetproof to IP66.
- Capsule mounting system.
- Quick, easy and safe installation.
- High quality LED modules from approved international suppliers.
- High energy saving potential.
- High lighting performance.
- Four different color temperature options: 3000K (warm white), 4000K (natural white), 5000K (cool white), 6500K (cool white).
- Water and dust proof.
- High impact resistance.
- Innovative design.
- Fully complies RoHS requirements.
- Recyclable ♻️ raw materials.

Materials

- Body; Polycarbonate (PC)
- Gasket; Silicon.
- Reflector; white (RAL 9016) polyester powder painted high quality sheet steel.
- Clip; stainless steel.
- Spring; Steel spring
- Connection; Suspension system and adjustable screw.

Driver Features;

- 220-240V AC 50/60 Hz ECG
- Pg 9 rakor
- Ölçüler : 77x1200x70mm

Standarts

- CE, TSE, GOST, RoHS, EN60598-2-1

Usage areas

- Dust and moisture industries
- Warehouses
- Chemical industries
- Plants
- Garages
- Tunnels
- Train and subway stations
- Shipyards
- Greenhouses
- Textile factories



Waterproof Luminaires Extreme CL2222 Waterproof Luminaires IP66 /IK08



Width (mm)	Size (mm)	h (mm)	Box (AD)	Average Weight (kg)	Order Code	
30W	77	1200	70	1	1.30	L2222-LED030NW-ECG

Opsiyonel Kod

- WW.Color Tempeture 3000K
- NW.Color Tempeture 4000K (Standarts)
- CW.Color Tempeture 5000K
- CW.Color Tempeture 6500K
- EL1.Emergency Battery 1 Hour
- EL1.Emergency Battery 3 Hour

According to your preference please add the **Option Code** at the end of the **Order Code**.



Tweet CL3010

LED Die-Cast Aluminium Housing



Description

Features

- Dustproof and jetproof to IP66.
- Quick, easy and safe installation.
- Design patent from TPE.
- High quality LED modules from approved international suppliers.
- Luminare lifetime of 50000 hours.
- Thermal-protected, voltage regulated drivers.
- Protection class I (standard) or II (optional).
- No CO₂ emission.
- Choice of any RAL colour on request.
- Standart RAL 9006
- Low service and maintenance costs.
- Maximized energy savings.
- The die -cast aluminium body and high quality materials ensure durability.
- Vandal proof and vibration proof.
- The latest led solution for outdoor lighting.
- The right lighting performance for project requirements.
- Easy connect system provides tool-free electrical connection.
- Effective thermal management.
- Special designed 6 cooling ribs.
- More light output and service life.
- High energy saving potential.
- The original aesthetic design.
- 64 high power white LEDs.
- Available in two different colour temperatures, 4000K (cool white) 5000K (natural white)
- Good lighting uniformity.
- Mercury free.
- Sharp profile.
- Fully complies RoHS requirements.
- Recyclable ♻️ raw materials.

Driver features;

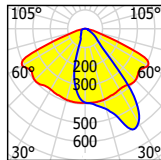
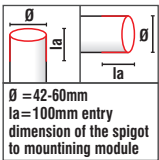
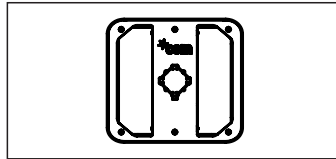
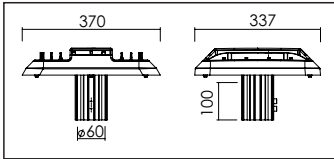
- Constant current.
- Harmonic filter protection.
- Short circuit protection and thermal protection integration.

Materials

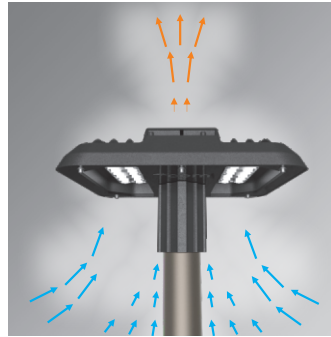
- Canopy; polyester powder painted non-corrosive high-pressure die-cast aluminium.
- Refractor; tempered 5mm flat glass, easy replacable.
- Gasket; silicon.
- integral injected gasket effuser to canopy.
- Bolt and nuts; stainless steel.

Applications

- Secondray roads
- Residential areas
- Parks
- Car parks
- Environment and security lighting
- Industrial areas
- Street and avenue

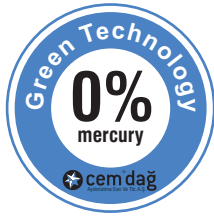
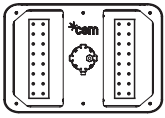


Efficient Cooling System



LED Configuration

32 LEDs Version



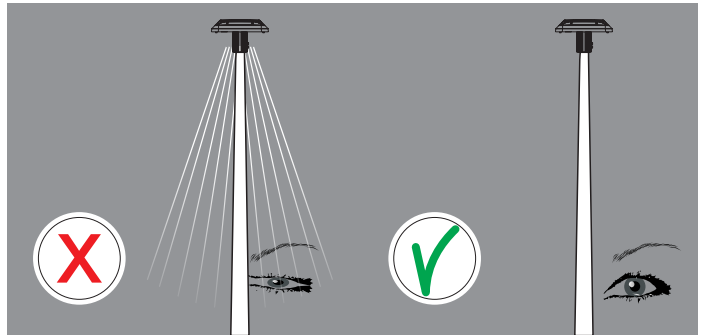
Colour Rendering Index Factor



Tweet CL3010 - Natural white LEDs
Good colour rendering
CRI > 70

HST - High pressure sodium luminaire
Poor colour rendering
CRI < 35

Glare-Free Optic Lens Design For Visual Comfort



Technical Data

- 220-240V AC 50/60 Hz ECG
- Pg 9 thread
- Dimensions: 337x370x190
- Power factor ≥ 0.95
- CRI ≥ 70

Standards

- CE, TSE, GOST, RoHS, ENEC, VDE, EN60598-2-3, EN60598-2-1
- EN62471 Photo biological safety of lamps and lamp systems.
- EN62031 LED modules for general lighting-safety specifications.

Tweet CL3010 LED Die-Cast Aluminium Housing



Product Information						Order Code			
Number of Power LEDs/ Rating	Lumen	Current (mA)	Service Life (hours)	Efficiency (lm/W)	Weight (kg)	Electronic Driver	1-10V Dimmable Electronic Driver	One Step Dimmable Electronic Driver	DALI Electronic Driver
32/~38W 4000K	4040	400	50000	106.31	5.5	L3010-LED038CW-ECG	L3010-LED038CW-DIM	L3010-LED038CW-ONE	L3010-LED038CW-DAL
32/~38W 5000K	4040	400	50000	106.31	5.5	L3010-LED038NW-ECG	L3010-LED038NW-DIM	L3010-LED038NW-ONE	L3010-LED038NW-DAL
32/~70W 4000K	6470	700	50000	92.42	5.5	L3010-LED070CW-ECG	L3010-LED070CW-DIM	L3010-LED070CW-ONE	L3010-LED070CW-DAL
32/~70W 5000K	6470	700	50000	92.42	5.5	L3010-LED070NW-ECG	L3010-LED070NW-DIM	L3010-LED070NW-ONE	L3010-LED070NW-DAL
32/~114W 4000K	8650	1050	50000	75.87	5.5	L3010-LED114CW-ECG	L3010-LED114CW-DIM	L3010-LED114CW-ONE	L3010-LED114CW-DAL
32/~114W 5000K	8650	1050	50000	75.87	5.5	L3010-LED114NW-ECG	L3010-LED114NW-DIM	L3010-LED114NW-ONE	L3010-LED114NW-DAL

Option Code: -RO.RAL Option, -CL2.Protection Class 2

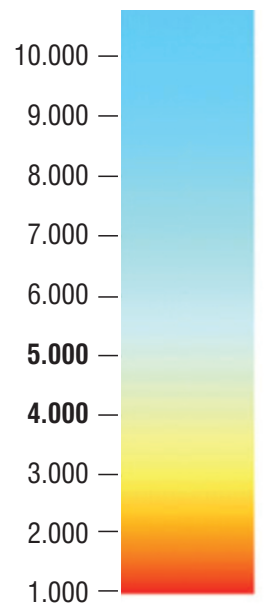
According to your preference, please add the **Option Code** at the end of the **Order Code**

For other lamp type/power lighting diagram please refer to our website.
-Compatible with lighting automation and control systems, for detailed information please refer to our website.
-CRI>70

Recommended Height For Mounting



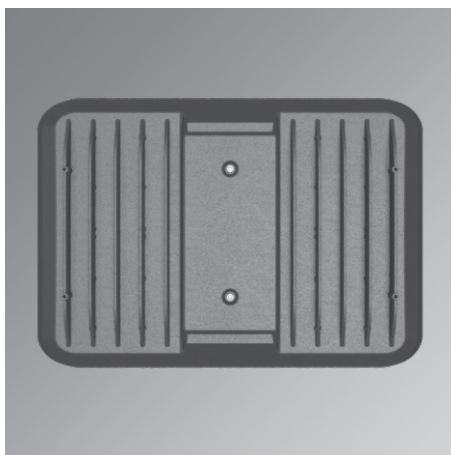
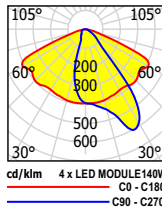
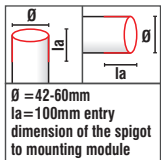
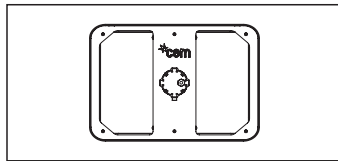
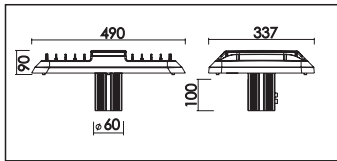
Kelvin Chart





Tweet CL3020

Die-Cast Aluminium Housing



Description

Features

- Dustproof and jetproof to IP66.
- Quick, easy and safe installation.
- Design patent from TPE.
- High quality LED modules from approved international suppliers.
- Luminaire lifetime of 50000 hours.
- Thermal-protected, voltage regulated drivers.
- Protection class I (standard) or II (optional).
- No CO₂ emission.
- Choice of any RAL colour on request.
- Standart RAL 9006
- Low service and maintenance costs.
- Maximized energy savings.
- The die -cast aluminium body and high quality materials ensure durability.
- Vandal proof and vibration proof.
- The latest led solution for outdoor lighting.
- The right lighting performance for project requirements.
- Easy connect system provides tool-free electrical connection.
- Effective thermal management.
- Special designed 10 cooling ribs.
- More light output and service life.
- High energy saving potential.
- The original aesthetic design.
- 64 high power white LEDs.
- Available in two different colour temperatures, 4000K (cool white) 5000K (natural white)
- Good lighting uniformity.
- Mercury free.
- Sharp profile.
- Fully complies RoHS requirements.
- Recyclable ♻️ raw materials.

- Driver features;
- Constant current.
 - Harmonic filter protection.
 - Short circuit protection and thermal protection integration.

Materials

- Canopy; polyester powder painted non-corrosive high-pressure die-cast aluminium.
- Refractor; tempered 5mm flat glass, easy replacable.
- Gasket; silicon. integral injected gasket effuser to canopy.
- Bolt and nuts; stainless steel.

Applications

- Secondray roads
- Residential areas
- Parks
- Car parks
- Environment and security lighting
- Industrial areas
- Street and avenue

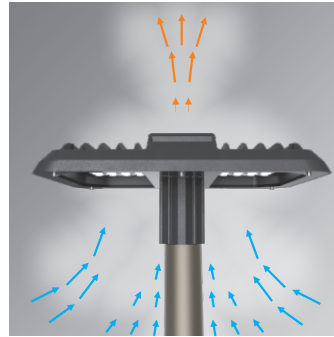


Tweet CL3020

Die-Cast Aluminium Housing

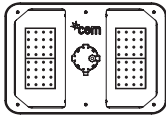


Efficient Cooling System



LED Configuration

64 LEDs Version



Colour Rendering Index Factor

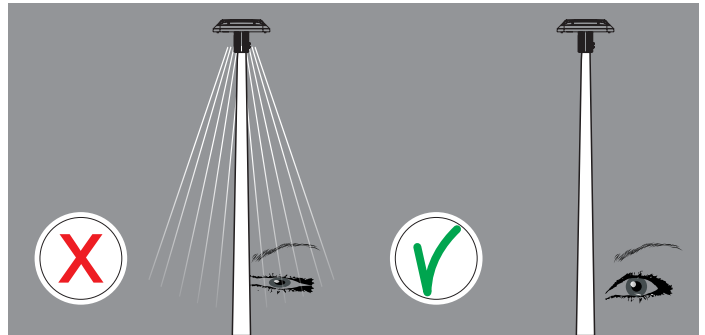


Tweet CL3020 - Natural white LEDs
Good colour rendering
CRI > 70



HST - High pressure sodium luminaire
Poor colour rendering
CRI < 35

Glare-Free Optic Lens Design For Visual Comfort



Technical Data

- 220-240V AC 50/60 Hz ECG
- Pg 9 thread
- Dimensions: 490x337x190
- Power factor ≥ 0.95
- CRI ≥ 70

Standards

- CE, TSE, GOST, RoHS, ENEC, VDE, EN60598-2-3, EN60598-2-1
- EN62471 Photo biological safety of lamps and lamp systems.
- EN62031 LED modules for general lighting-safety specifications.



Tweet CL3020 LED Die-Cast Aluminium Housing



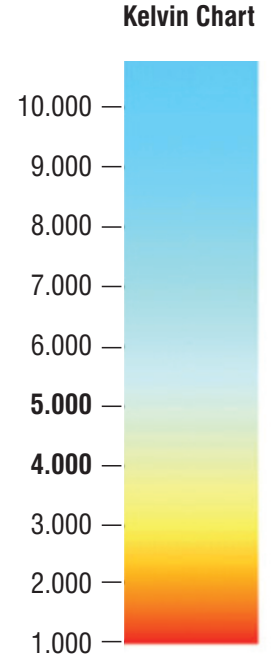
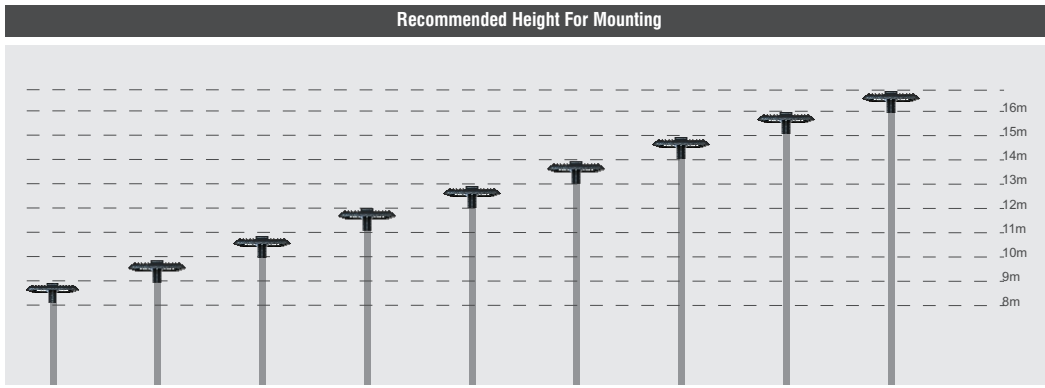
Product Information						Order Code			
Number of Power LEDs/ Rating	Lumen	Current (mA)	Service Life (hours)	Efficiency (lm/W)	Weight (kg)	Electronic Driver	One Step Dimmable Electronic Driver	1-10V Dimmable Electronic Driver	DALI Electronic Driver
64/~76W 4000K	8800	400	50000	106.31	6.5	L3020-LED70CW-ECG	L3020-LED70CW-ONE	L3020-LED70CW-DIM	L3020-LED70CW-DAL
64/~76W 5000K	8800	400	50000	106.31	6.5	L3020-LED70NW-ECG	L3020-LED70NW-ONE	L3020-LED70NW-DIM	L3020-LED70NW-DAL
64/~140W 4000K	12940	700	50000	92.42	6.5	L3020-LED140CW-ECG	L3020-LED140CW-ONE	L3020-LED140CW-DIM	L3020-LED140CW-DAL
64/~140W 5000K	12940	700	50000	92.42	6.5	L3020-LED140NW-ECG	L3020-LED140NW-ONE	L3020-LED140NW-DIM	L3020-LED140NW-DAL
64/~228W 4000K	17300	1050	50000	75.87	6.5	L3020-LED228CW-ECG	L3020-LED228CW-ONE	L3020-LED228CW-DIM	L3020-LED228CW-DAL
64/~228W 5000K	17300	1050	50000	75.87	6.5	L3020-LED228NW-ECG	L3020-LED228NW-ONE	L3020-LED228NW-DIM	L3020-LED228NW-DAL

Option Code

- RO.RAL Option
- CL2.Protection Class 2

According to your preference, please add the **Option Code** at the end of the **Order Code**

-For other lamp type/power lighting diagram please refer to our website.
-Compatible with lighting automation and control systems, for detailed information please refer to our website.
-CRI>70



Urban and Road Luminaires



Tanım

Özellikler

- Toz ve neme karşı IP66 koruma.
- Kapsül montaj sistemi.
- Hızlı kolay ve güvenli kurulum sayesinde aletsiz montaj.
- Uluslararası üreticilerden yüksek kalite LED.
- Isıl korumalı, voltaj regüleli sürücü.
- Koruma sınıfı I (standart) veya koruma sınıfı II (opsiyonel).
- Düşük CO₂ salımı.
- İsteğe göre RAL renkleri.
- Standart RAL 7047.
- Son teknoloji LED çözümleri.
- Aletsiz enerji girişi.
- Etkin ısı yöntemi.
- Yüksek ışık ve servis ömrü.
- İki farklı renksel geri verim seçeneği CRI > 70 (standart) veya CRI > 80 (opsiyonel)
- Düşük bakım ve servis maliyeti.
- Yüksek tasarruf potansiyeli.
- Alüminyum enjeksiyon gövde ve yüksek dayanıklılık.
- Kaliteli hammaddede sayesinde uzun ömür ve dayanıklılık.
- Cıva kullanımı yok.
- Keskin profil.
- Homojen ışık dağılımı.
- Orjinal, estetik tasarım.
- Maximum 32 adet beyaz power LED. (16+16)
- Yedi farklı renk sıcaklığı opsiyonu: 2700K (sıcak beyaz), 3000K (sıcak beyaz), 4000K (doğal beyaz) 5000K (soğuk beyaz) 5700K (soğuk beyaz), 6000K (soğuk beyaz), 6500K (soğuk beyaz).
- Etkin soğutma gövde yapısı.
- Özel tasarlanmış 12 adet soğutma kanalı.
- RoHS standartlarına uygun.
- Geri dönüşümlü ♻️ hammaddede.

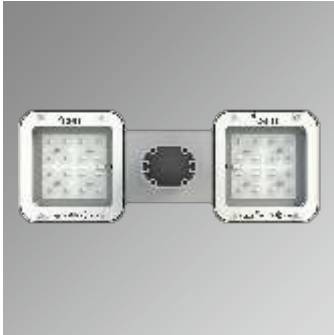
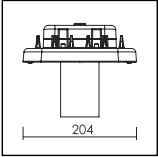
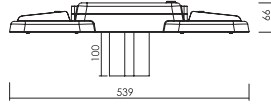
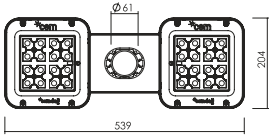
- Sürücü Özellikleri;
- Sabit akım,
- Harmonik filtre koruması,
- Kısa devre koruması ve termal koruma entegrasyonu.

Materyaller

- Gövde iki parça; polyester toz boyalı korozyona dayanıklı yüksek basınçlı alüminyum enjeksiyon.
- Refraktör; 5mm temperli düz cam
- Conta; silikon.
- Cıvata ve somunlar; paslanmaz çelik.

Kullanım Alanları

- Yerleşim alanları
- Parklar
- Çevre ve güvenlik aydınlatması
- Otoparklar



Jet Midi CL3025

LED Aluminyum Enjeksiyon Gövde

cem dağ
Aydınlatma Teknolojileri

cem



Yol Armatürleri		Jet Midi CL3025 Aluminyum Enjeksiyon Gövde				LED	
IP66 / IK10 / 4000K (Standart) / RAL 7047 / CL1. Koruma Sınıfı 1 (Standart) / CRI>70 (Standart)							
En (mm)	Boy (mm)	h (mm)	Koli Adet (AD)	Ağırlık (kg)	Sipariş Kodu		
32/~25W/ 290mA	530	204	166	1	L3025-LED025NW-ECG		
32/~33W/ 350mA	530	204	166	1	L3025-LED033NW-ECG		
32/~48W/ 500mA	530	204	166	1	L3025-LED048NW-ECG		
32/~62W/ 600mA	530	204	166	1	L3025-LED062NW-ECG		
32/~72W/ 700mA	530	204	166	1	L3025-LED072NW-ECG		
32/~82W/ 800mA	530	204	166	1	L3025-LED082NW-ECG		
32/~100W/ 925mA	530	204	166	1	L3025-LED100NW-ECG		
32/~110W/ 1050mA	530	204	166	1	L3025-LED110NW-ECG		
Opsiyonel Kod		Led Chip		Akım (mA)	lm/ W		
RO. RAL 7022	CL1. Koruma Sınıfı 1 (Standart)	Eco Gold Lümen Paketi		700mA	110		
RO. RAL 7047 (Standart)	CL2. Koruma Sınıfı 2 (Opsiyonel)			800mA	100		
RO. RAL 9007	EC. Kolay Bağlantı Sistemi (Standart)			925mA	97		
DIM. 1-10V Dimedilebilir Sürücü	CW. Kelvin Rengi 6500K			1050mA	95		
ONE. Tek Kademeli Dimedilebilir Sürücü	CW. Kelvin Rengi 6000K	Performans Platinum Lümen Paketi		1400mA	85		
DAL. Dalı Elektronik Sürücü	CW. Kelvin Rengi 5700K			700mA	165		
EG. Eco Gold Lümen Paketi (Standart)	CW. Kelvin Rengi 5000K			800mA	161		
PP. Performans Platinum Lümen Paketi (Opsiyonel)	NW. Kelvin Rengi 4000K (Standart)			925mA	158		
CM. Kapsül Montaj Sistemi (Standart)	WW. Kelvin Rengi 3000K			1050mA	155		
CR7. CRI>70 (Standart)	WW. Kelvin Rengi 2700K			1400mA	145		
CR8. CRI>80 (Opsiyonel)							

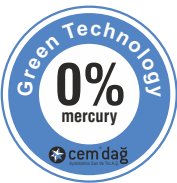
Tercihinize göre **Opsiyonel Kodları Sipariş Kodlarının** sonuna ekleyiniz.
Opsiyon fiyat farkları için **Opsiyon Listesine** bakınız.

2016/10 LED Chip Lümen değerleridir.
Led Chip Lümen değerleri 25 C°'de ölçülmüştür.
Detaylı bilgi için satış ekibiyle iletişime geçiniz.

Özel Tasarlanmış Optik Lens Sayesinde Kamaşmasız Aydınlatma



Renk Geriverim Endeksi



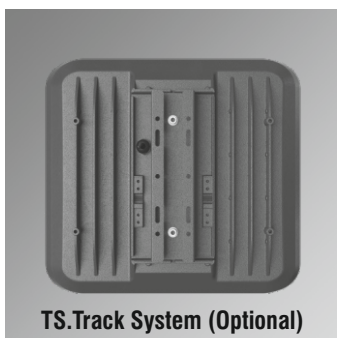
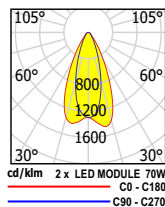
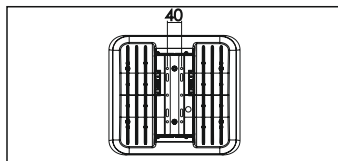
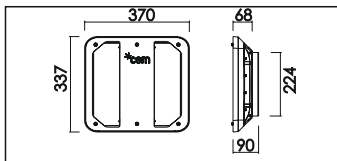
Doğal beyaz LED iyi renk geriverimi
CRI > 70

HST - Yüksek basınçlı sodyum armatür
Düşük renk geriverimi
CRI < 35



Compact Torque CL4310

Die-Cast Aluminium Housing



TS.Track System (Optional)



Z.Z Track System (Standard)



Description

Features

- Dustproof and jetproof to IP66.
- Capsule mounting system.
- Quick, easy and safe installation.
- Design patent from TPE.
- High quality LED modules from approved international suppliers.
- Thermal-protected, voltage regulated drivers.
- Class I (standard) or class II (optional).
- Low CO₂ emission.
- Choice of any RAL colour on request.
- Standart RAL 9007
- Low service and maintenance costs.
- Maximized energy savings.
- The die -cast aluminium body and high quality materials ensure durability.
- Vandal proof and vibration proof.
- The latest led solution for outdoor lighting.
- The right lighting performance for project requirements.
- Available in two different colour rendering index. CRI > 70 (standard) or CRI > 80 (optional).
- Easy connect system provides tool-free electrical connection.
- Effective thermal management.
- Special designed 6 cooling ribs.
- More light output and service life.
- High energy saving potential.
- The original aesthetic design.
- Max. 32 high power white LEDs.
- Available in seven different colour temperatures. 2700K (cool white), 3000K (warm white), 4000K (natural white), 5000K (cool white), 5700K (cool white), 6000K (cool white), 6500K (cool white).
- Good lighting uniformity.
- Mercury free.
- Sharp profile.
- Fully complies RoHS requirements.
- Recyclable raw materials.

Driver features;

- Constant current.
- Harmonic filter protection.
- Short circuit protection and thermal protection integration.

Materials

- Canopy; polyester powder painted non-corrosive high-pressure die-cast aluminium.
- Refractor; tempered 5mm flat glass, easy replacable.
- Gasket; silicon.
- Bolt and nuts; stainless steel.

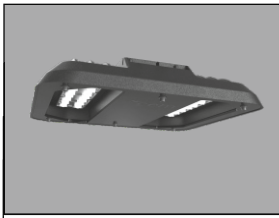
Applications

- Industrial areas
- Warehouses
- Chemical industries
- Textile factories
- Garages
- Tunnels
- Subways
- Dust and moisture industries
- Aircraft sheds
- Sport halls
- Stations



Compact Torque CL4310

Die-Cast Aluminium Housing



Industrial Luminaires

LED Compact Torque CL4310 Die-Cast Aluminium Housing

IP66 / IK10 / 4000K (Standard) / RAL 9007 / CL1.Class 1 (Standard) / CRI>70 (Standard)

	W (mm)	L (mm)	h (mm)	Item /Box	Weight (kg)	Order Code	Unit Price
32/~25W/ 290mA	370	337	90	1	4.85	L4310-LED025NW-ECG	408€
32/~33W/ 350mA	370	337	90	1	4.90	L4310-LED033NW-ECG	408€
32/~48W/ 500mA	370	337	90	1	4.90	L4310-LED048NW-ECG	445€
32/~62W/ 600mA	370	337	90	1	4.90	L4310-LED062NW-ECG	445€
32/~72W/ 700mA	370	337	90	1	5.20	L4310-LED072NW-ECG	445€
32/~82W/ 800mA	370	337	90	1	4.90	L4310-LED082NW-ECG	482€
32/~100W/ 925mA	370	337	90	1	5.20	L4310-LED100NW-ECG	482€
32/~110W/ 1050mA	370	337	90	1	5.20	L4310-LED110NW-ECG	482€

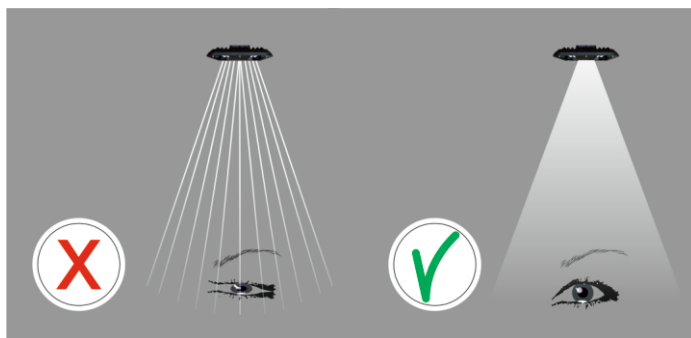
Option Code	Led Chip	Current(mA)	lm/W
-RO.RAL 7022	Eco Gold Lumen Package	700mA	110
-RO.RAL 7035		800mA	100
-RO.RAL 9007 (Standard)		925mA	97
-DIM. 1-10V Dimmable Electronic Driver		1050mA	95
-ONE.One Step Dimmable Electronic Driver		1400mA	85
-DAL. DALI Electronic Driver	Performans Platinum Lumen Package	700mA	165
-EG. Eco Gold Lumen Package (Standard)		800mA	161
-PP. Performance Platinum Lumen Package (Optional)		925mA	158
-CM.Capsule Version System (Standard)		1050mA	155
-CL1.Class 1 (Standard)		1400mA	145
-Z.Track System (Standard)			

According to your preference, please add the **Option Code** at the end of the **Order Code**

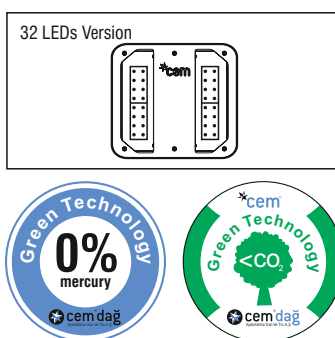
LED Chip Lumen values are based on 2014/12. LED Chip Lumen values have been measured at 25C°. Please get in contact with Sales Team for detailed information.

Industrial Luminaires

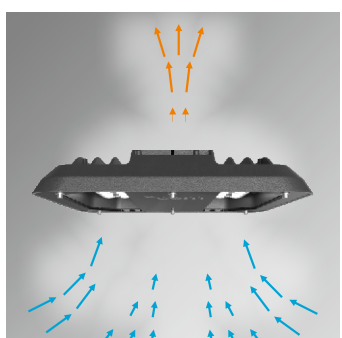
Glare-Free Optic Lens Design For Visual Comfort



LED Configuration



Efficient Cooling System



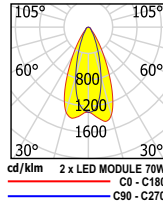
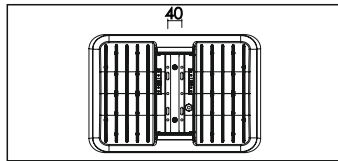
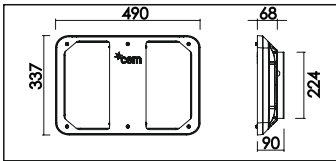
- Technical Data**
- 220-240V AC 50/60 Hz ECG
 - Pg 13,5 thread
 - Dimensions: 370x337x90mm
 - Power factor ≥ 0.95
 - CRI ≥ 70 (Standard)
- Standards**
- CE, TSE, GOST, RoHS
 - VDE, EN60598-2-1
 - EN62471 Photo biological safety of lamps and lamp systems.
 - EN62031 LED modules for general lighting-safety specifications.





Compact Torque CL4320

Die-Cast Aluminium Housing



TS.Track System (Optional)



Z.Z Track System (Standard)



Description

Features

- Dustproof and jetproof to IP66.
- Capsule mounting system.
- Quick, easy and safe installation.
- Design patent from TPE.
- High quality LED modules from approved international suppliers.
- Thermal-protected, voltage regulated drivers.
- Class I (standard) or class II (optional).
- Low CO₂ emission.
- Choice of any RAL colour on request.
- Standart RAL 9007
- Low service and maintenance costs.
- Maximized energy savings.
- The die -cast aluminium body and high quality materials ensure durability.
- Vandal proof and vibration proof.
- The latest led solution for outdoor lighting.
- The right lighting performance for project requirements.
- Available in two different colour rendering index. CRI>70(standard) or CRI>80(optional).
- Easy connect system provides tool-free electrical connection.
- Effective thermal management.
- Special designed 10 cooling ribs.
- More light output and service life.
- High energy saving potential.
- The original aesthetic design.
- Max. 64 high power white LEDs.
- Available in seven different colour temperatures. 2700K (cool white) 3000K (warm white), 4000K (natural white), 5000K (cool white), 5700K (cool white), 6000K (cool white), 6500K (cool white).
- Good lighting uniformity.
- Mercury free.
- Sharp profile.
- Fully complies RoHS requirements.
- Recyclable raw materials.

Driver features;

- Constant current.
- Harmonic filter protection.
- Short circuit protection and thermal protection integration.

Materials

- Canopy; polyester powder painted non-corrosive high-pressure die-cast aluminium.
- Refractor; tempered 5mm flat glass, easy replacable.
- Gasket; silicon.
- Bolt and nuts; stainless steel.

Applications

- Industrial areas
- Warehouses
- Chemical industries
- Textile factories
- Garages
- Tunnels
- Subways
- Dust and moisture industries
- Aircraft sheds
- Sport halls
- Stations



Compact Torque CL4320

Die-Cast Aluminium Housing



Industrial Luminaires

LED Compact Torque CL4320 Die-Cast Aluminium Housing

IP66 / IK10 / 4000K (Standard) / RAL 9007 / CL1.Class 1 (standard) / CRI>70 (Standard)

	W (mm)	L (mm)	h (mm)	Item /Box	Weight (kg)	Order Code	Unit Price
64/~57W/ 290mA	490	337	90	1	7.30	L4320-LED057NW-ECG	680€
64/~68W/ 350mA	490	337	90	1	7.30	L4320-LED068NW-ECG	680€
64/~86W/ 420mA	490	337	90	1	7.30	L4320-LED086NW-ECG	680€
64/~102W/ 500mA	490	337	90	1	7.30	L4320-LED102NW-ECG	717€
64/~125W/ 600mA	490	337	90	1	7.30	L4320-LED125NW-ECG	717€
64/~150W/ 700mA	490	337	90	1	7.30	L4320-LED150NW-ECG	717€
64/~175W/ 800mA	490	337	90	1	7.30	L4320-LED175NW-ECG	754€
64/~200W/ 925mA	490	337	90	1	7.30	L4320-LED200NW-ECG	754€
64/~220W/ 1050mA	490	337	90	1	7.30	L4320-LED220NW-ECG	754€
64/~275W/ 1400mA	490	337	90	1	7.70	L4320-LED275NW-ECG	-
64/~300W/ 1750mA	490	337	90	1	7.70	L4320-LED300NW-ECG	-

Option Code	Led Chip	Current(mA)	lm/W
-RO.RAL 7022	Eco Gold Lumen Package	700mA	110
-RO.RAL 7035		800mA	100
-RO.RAL 9007 (Standard)		925mA	97
-DIM. 1-10V Dimmable Electronic Driver		1050mA	95
-ONE.One Step Dimmable Electronic Driver		1400mA	85
-DAL. DALI Electronic Driver	Performans Platinum Lumen Package	700mA	165
-EG. Eco Gold Lumen Package (Standard)		800mA	161
-PP. Performance Platinum Lumen Package (Optional)		925mA	158
-CM.Capsule Version System (Standard)		1050mA	155
-CL1.Class 1 (Standard)		1400mA	145
-Z.Track System (Standard)			
-CW. Colour Temperature 6500K			
-CW. Colour Temperature 6000K			
-CW. Colour Temperature 5700K			
-CW. Colour Temperature 5000K			
-NW. Colour Temperature 4000K (Standard)			
-WW. Colour Temperature 3000K			
-WW. Colour Temperature 2700K			
-CR7.CRI>70 (Standard)			
-CR8.CRI>80 (Optional)			
-CL2.Class 2 (Optional)			
-TS.Track System			

LED Chip Lumen values are based on 2014/12.
LED Chip Lumen values have been measured at 25°C.
Please get in contact with Sales Team for detailed information.

According to your preference, please add the **Option Code** at the end of the **Order Code**

Industrial Luminaires

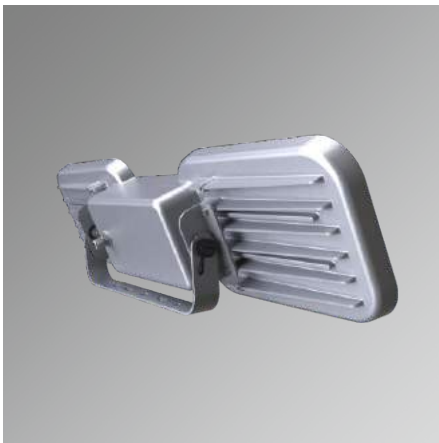
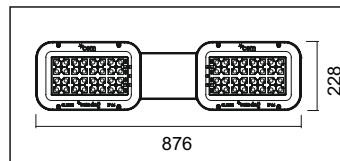
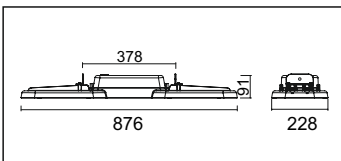
Glare-Free Optic Lens Design For Visual Comfort

LED Configuration

64 LED's Version

Efficient Cooling System

- #### Technical Data
- 220-240V AC 50/60 Hz ECG
 - Pg 13,5 thread
 - Dimensions: 490x337x90mm
 - Power factor ≥ 0.95
 - CRI ≥ 70
- #### Standards
- CE, TSE, GOST, RoHS, ENEC, VDE, EN60598-2-1.
 - EN62471 Photo biological safety of lamps and lamp systems.
 - EN62031 LED modules for general lighting-safety specifications.



Description

Features

- Dustproof and jetproof to IP66.
- Capsule mounting system.
- Quick, easy and safe installation.
- Design patent from TPE.
- High quality LED modules from approved international suppliers.
- Thermal-protected, voltage regulated drivers.
- Class I (standard) or class II (optional).
- Low CO₂ emission.
- Choice of any RAL colour on request.
- Standart RAL 7047.
- Low service and maintenance costs.
- Maximized energy savings.
- The die -cast aluminium body and high quality materials ensure durability.
- Vandal proof and vibration proof.
- The latest led solution for industrial lighting.
- The right lighting performance for project requirements.
- Available in two different colour rendering index. CRI > 70 (standard) or CRI > 80 (optional).
- Easy connect system provides tool-free electrical connection.
- Effective thermal management.
- Special designed 12 cooling ribs.
- More light output and service life.
- High energy saving potential.
- The original aesthetic design.
- Max. 64 high power white LEDs.
- Available in seven different colour temperatures. 2700K (cool white), 3000K (warm white), 4000K (natural white), 5000K (cool white), 5700K (cool white), 6000K (cool white), 6500K (cool white).
- Good lighting uniformity.
- Mercury free.
- Sharp profile.
- Fully complies RoHS requirements.
- Recyclable raw materials.

Driver features;

- Constant current.
- Harmonic filter protection.
- Short circuit protection and thermal protection integration.

Materials

- Canopy; polyester powder painted non-corrosive high-pressure die-cast aluminium.
- Refractor; tempered 5mm flat glass, easy replacable.
- Gasket; silicon.
- Bolt and nuts; stainless steel.

Applications

- Industrial areas
- Warehouses
- Chemical industries
- Textile factories
- Garages
- Tunnels
- Subways
- Dust and moisture industries
- Aircraft sheds
- Sport halls
- Stations

Jet Maxi CL4330 LED Die-Cast Aluminium Housing



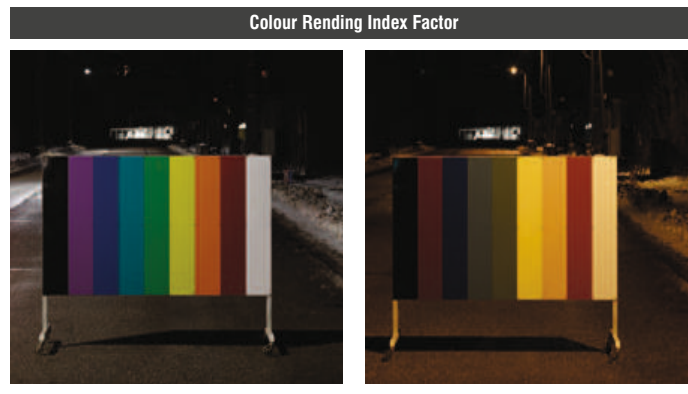
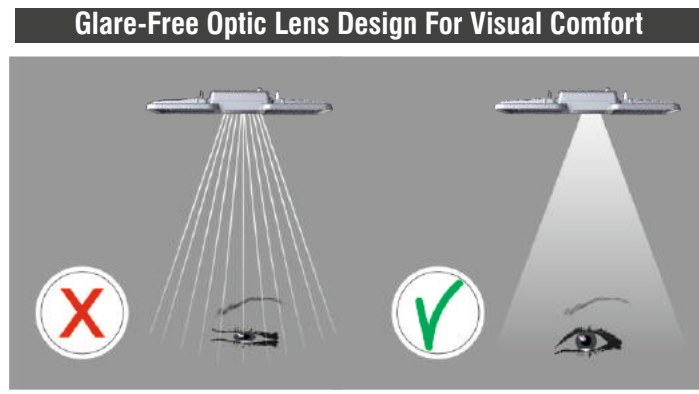
Industrial Luminaires LED Jet Maxi CL4330 Die-Cast Aluminium Housing

IP66 / IK10 / 4000K (Standard) / RAL 7047 / CL1. Class 1 (Standard) / CRI > 70 (Standard)

	W (mm)	L (mm)	h (mm)	Item /Box	Weight (kg)	Order Code
64/~57W/ 290mA	876	228	91	1	12.00	L4330-LED057NW-EGG
64/~68W/ 350mA	876	228	91	1	12.00	L4330-LED068NW-EGG
64/~86W/ 420mA	876	228	91	1	12.00	L4330-LED086NW-EGG
64/~102W/ 500mA	876	228	91	1	12.00	L4330-LED102NW-EGG
64/~125W/ 600mA	876	228	91	1	12.00	L4330-LED125NW-EGG
64/~150W/ 700mA	876	228	91	1	12.00	L4330-LED150NW-EGG
64/~175W/ 800mA	876	228	91	1	12.00	L4330-LED175NW-EGG
64/~200W/ 925mA	876	228	91	1	12.00	L4330-LED200NW-EGG
64/~220W/ 1050mA	876	228	91	1	12.00	L4330-LED220NW-EGG
64/~275W/ 1400mA	876	228	91	1	12.00	L4330-LED275NW-EGG
64/~300W/ 1750mA	876	228	91	1	12.00	L4330-LED300NW-EGG

Option Code	Led Chip	Current(mA)	lm/W
-RO. RAL 7022	Eco Gold Lumen Package	700mA	110
-RO. RAL 7047 (Standard)		800mA	100
-RO. RAL 9007		925mA	97
-DIM. 1-10V Dimmable Electronic Driver		1050mA	95
-ONE. One Step Dimmable Electronic Driver		1400mA	85
-DAL. DALI Electronic Driver		700mA	165
-EG. Eco Gold Lumen Package (Standard)		800mA	161
-PP. Performance Platinum Lumen Package (Optional)		925mA	158
-CM. Capsule Version System		1050mA	155
-CR7. CRI > 70 (Standard)		1400mA	145
-CR8. CRI > 80 (Optional)			
According to your preference, please add the Option Code at the end of the Order Code			

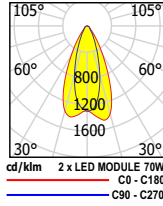
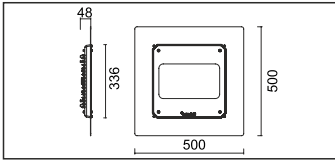
LED Chip Lumen values are based on 2014/12. LED Chip Lumen values have been measured at 25°C. Please get in contact with Sales Team for detailed information.



Natural white LEDs Good colour rendering CRI > 70

HST - High pressure sodium luminaire Poor colour rendering CRI < 35

Industrial Luminaires



Description

Features

- Dustproof and jetproof to IP66.
- Capsule mounting system.
- Quick, easy and safe installation.
- Design patent from TPE.
- High quality LED modules from approved international suppliers.
- Luminaire lifetime of 50000 hours.
- Thermal-protected, voltage regulated drivers.
- Class I (standard) or class II (optional).
- Low CO₂ emission.
- Choice of any RAL colour on request.
- Standart RAL 9016.
- Low service and maintenance costs.
- Maximized energy savings.
- The die -cast aluminium body and high quality materials ensure durability.
- Vandal proof and vibration proof.
- The latest led solution for outdoor lighting.
- The right lighting performance for project requirements.
- Available in two different colour rendering index. CRI > 70 (standard) or CRI > 80 (optional).
- Easy connect system provides tool-free electrical connection.
- Effective thermal management.
- Special designed 6 cooling ribs.
- More light output and service life.
- High energy saving potential.
- The original aesthetic design.
- Maximum 32 high power white LEDs.
- Available in seven different colour temperatures. 2700K (warm white), 3000K (warm white), 4000K (natural white), 5000K (cool white), 5700K (cool white), 6000K (cool white), 6500K (cool white), 4000K (natural white), 5000K (cool white)
- Good lighting uniformity.
- Mercury free.
- Sharp profile.
- Fully complies RoHS requirements.
- Recyclable raw materials.

Driver features;

- Constant current.
- Harmonic filter protection.
- Short circuit protection and thermal protection integration.

Materials

- Canopy; polyester powder painted non-corrosive high-pressure die-cast aluminium.
- Refractor; tempered 5mm flat glass, easy replaceable.
- Gasket; silicon.
- Bolt and nuts; stainless steel.

Applications

- Gas stations

Technical Data

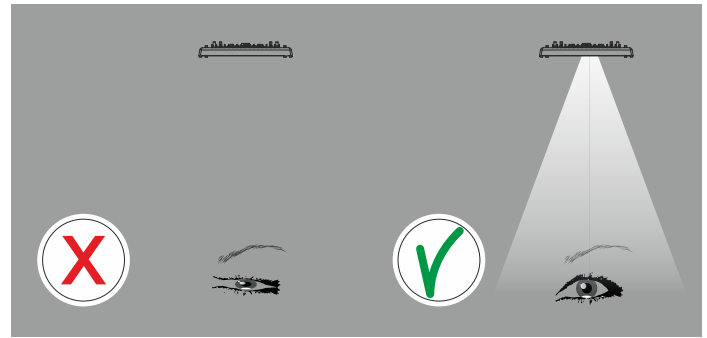
- 220-240V AC 50/60 Hz ECG
- Pg 9 thread
- Dimensions: 500x500x48mm
- Power factor ≥ 0.95
- CRI ≥ 70

Standards

- CE, TSE, GOST, RoHS, ENEC, VDE, EN60598-2-2
- EN62471 Photo biological safety of lamps and lamp systems.
- EN62031 LED modules for general lighting-safety specifications.

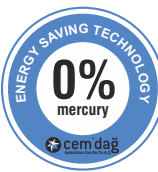
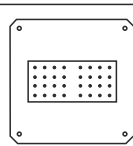


Glare-Free Optic Lens Design For Visual Comfort



LED Konfigürasyon

32 LED
Versiyon



Capsule Tech CL5210 LED Die-Cast Aluminium Housing



Gas Station Luminaires LED Capsule Tech CL5210 Die-Cast Aluminium Housing IP66 / IK10 / 4000K (Standart) / RAL 9016 / CL1. Koruma Sınıfı 1 (Standard) / CRI>70 (Standard)



	W (mm)	L (mm)	h (mm)	Item /Box	Weight (kg)	Order Code
16/~35W 700mA	370	337	190	1	4.85	L5210-LED035NW-ECG
16/~40W 800mA	370	337	190	1	4.90	L5210-LED040NW-ECG
16/~50W 925mA	370	337	190	1	4.90	L5210-LED050NW-ECG
16/~55W 1050mA	370	337	190	1	4.90	L5210-LED055NW-ECG
16/~75W 1400mA	370	337	190	1	5.20	L5210-LED075NW-ECG
32/~70W 700mA	370	337	190	1	4.85	L5210-LED070NW-ECG
32/~80W 800mA	370	337	190	1	4.90	L5210-LED080NW-ECG
32/~95W 925mA	370	337	190	1	4.90	L5210-LED095NW-ECG
32/~110W 1050mA	370	337	190	1	4.90	L5210-LED110NW-ECG
32/~150W 1400mA	370	337	190	1	5.20	L5210-LED150NW-ECG

Optional Code

-RO.RAL Option	-DAL.DALI Electronic Driver
-CL1.Class 1 (Standard)	-CW. Colour Temperature 6500K
-CL2.Class 2 (Optional)	-CW. Colour Temperature 6000K
-DIM.1-10V Dimmable Electronic Driver	-CW. Colour Temperature 5700K
-ONE.One Step Dimmable Electronic Driver	-CW. Colour Temperature 5000K
-PP. Performance Platinum Lumen Package (Standard)	-NW. Colour Temperature 4000K (Standard)
-CR8.CRI>80(Optional)	-WW. Colour Temperature 3000K
-CR7.CRI>70(Standard)	-WW. Colour Temperature 2700K
-TS.Track System	-EG. Eco Gold Lumen Package (Standard)
-Z. Z Track System (Standard)	-CM.Capsule Mounting System (Standard)

According to your preference, please add the **Option Code** at the end of the **Order Code**

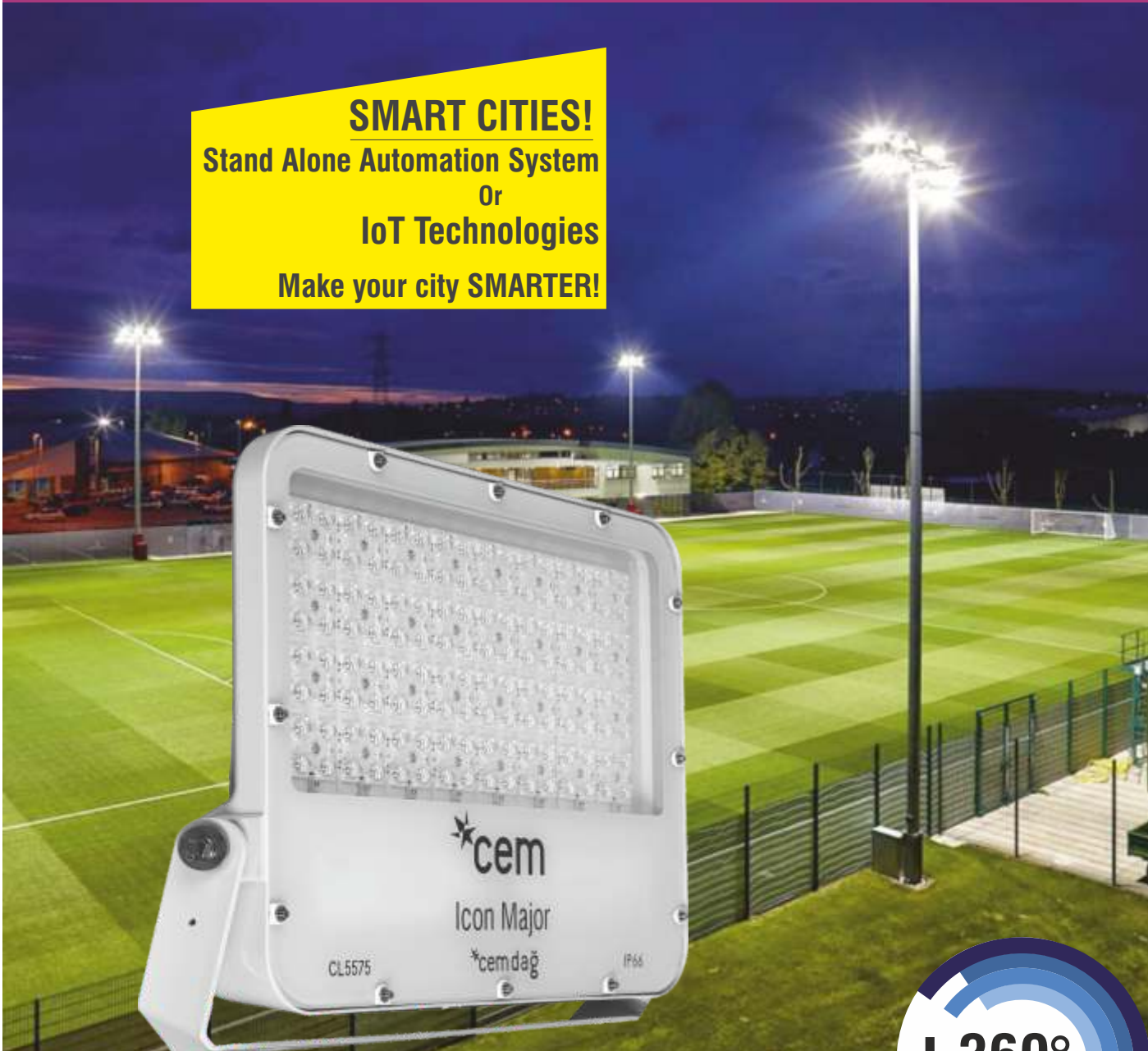
Led Chip	Current(mA)	lm/W
Eco Gold Lumen Package	700mA	110
	800mA	100
	925mA	97
	1050mA	95
	1400mA	85
Performans Platinum Lumen Package	700mA	165
	800mA	161
	925mA	158
	1050mA	155
	1400mA	145

LED Chip Lumen values are based on 2014/12.
LED Chip Lumen values have been measured at 25°C.
Please get in contact with Sales Team for detailed information.



LED Icon Die-Cast Aluminium Housing Series

SMART CITIES!
Stand Alone Automation System
Or
IoT Technologies
Make your city SMARTER!

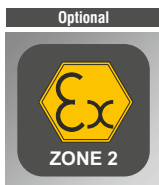
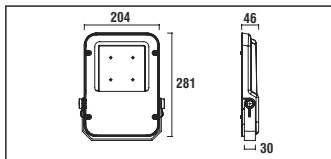


LED Icon

CL5515 - CL5535 - CL5555 - CL5575

Eco Gold Lumen Package Performance Platinum Lumen Package





Description

Features

- Dustproof and jetproof to IP66.
- Quick, easy and safe installation.
- Design patent from TPE.
- High quality LED modules from approved international suppliers.
- Thermal-protected, voltage regulated drivers.
- Class I (standard) or class II (optional).
- Low CO₂ emission.
- Choice of any RAL colour on request.
- Standart RAL 7047
- Low service and maintenance costs.
- Maximized energy savings.
- The die -cast aluminium body and high quality materials ensure durability.
- Vandal proof and vibration proof.
- The latest led solution for outdoor lighting.
- The right lighting performance for project requirements.
- Available in three different colour rendering index. CRI > 70 (standard), CRI > 80 (optional), or CRI > 90 (optional).
- Easy connect system provides tool-free electrical connection.
- Effective thermal management.
- More light output and service life.
- High energy saving potential.
- The original aesthetic design.
- Max. 16 high power white LEDs.
- Available in seven different colour temperatures; 2700K (warm white), 3000K (warm white), 4000K (natural white), 5000K (cool white), 5700K (cool white), 6000K (cool white), 6500K (cool white).
- Good lighting uniformity.
- Mercury free.
- Sharp profile.
- Fully complies RoHS requirements.
- Recyclable ♻️ raw materials.

Driver features;

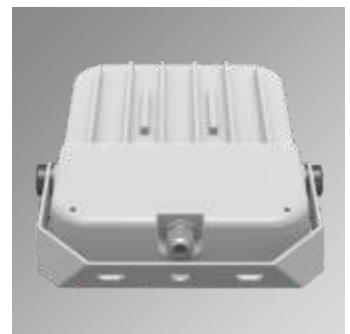
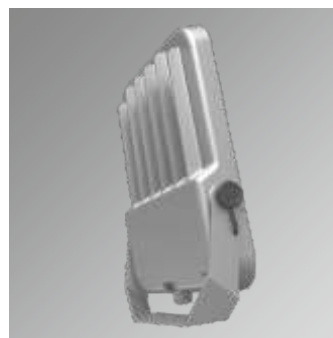
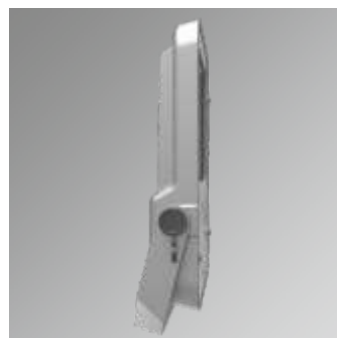
- Constant current.
- Harmonic filter protection.
- Short circuit protection and thermal protection integration.

Materials

- Canopy; polyester powder painted non-corrosive high-pressure die-cast aluminium.
- Refractor; tempered 5mm flat glass, easy replaceable.
- Gasket; silicon.
- Bolt and nuts; stainless steel.

Applications

- Parks
- Car parks
- Environment and security lighting



Icon Mini CL5515 LED Die-Cast Aluminium Housing



Products of Cemdag are Made in European Union Custom Union and Declaration of Conformity complies fully with CE Standards.

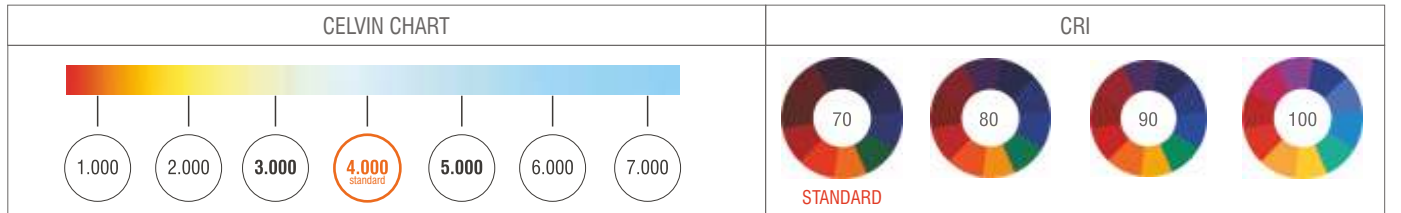
Floodlights Icon Mini CL5515 Die-Cast Aluminium Housing IP66 / IK10 / 4000K (Standard) / RAL 7047 / CL1. Class 1 (Standard) / CRI>70 (Standard)

	W (mm)	L (mm)	h (mm)	Item /Box	Average Weight (kg)	Order Code
16/~35W/ 700mA	204	281	46	1	2.30	L5515-LED035NW-ECG
16/~50W/ 925mA	204	281	46	1	2.30	L5515-LED050NW-ECG
16/~60W/1050mA	204	281	46	1	2.30	L5515-LED060NW-ECG

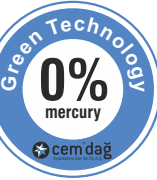
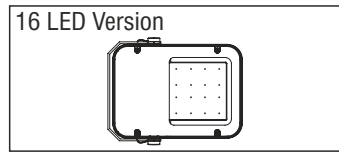
Option Code			
-RO.RAL 7021 (Metalic)	-CW. Colour Temperature 6500K	-CR7. CRI>70 (Standard)	-COL.1550 (Standard)
-RO.RAL 7047 (Standard)	-CW. Colour Temperature 6000K	-CR8. CRI>80 (Optional)	-EX. Atex (Optional)
-RO.RAL 9007	-CW. Colour Temperature 5700K	-CR9. CRI>90 (Optional)	
-DIM.0-10V or 1-10V Dimmable Electronic Driver	-CW. Colour Temperature 5000K	-CL1. Class 1 (Standard)	
-ONE. Stand Alone Automation	-NW. Colour Temperature 4000K (Standard)	-CL2. Class 2 (Optional)	
-DAL. DALI Electronic Driver	-WW. Colour Temperature 3000K	-EG. Eco Gold Lumen Package (Standard)	
-IoT. Internet of Things Automation	-WW. Colour Temperature 2700K	-PP. Performance Platinum Lumen Package (Optional)	

According to your preference, please add the **Option Code** at the end of the **Order Code**. Lumens are minimum 115 lm/W maximum 145 lm/W depends on currents and LED quantities.

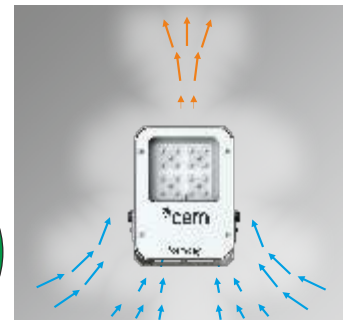
Standard lens is COL1550. According to your preference, please add the **Optional Lens Code** at the end of the **Order Code**. To see other lens options please see COL options page



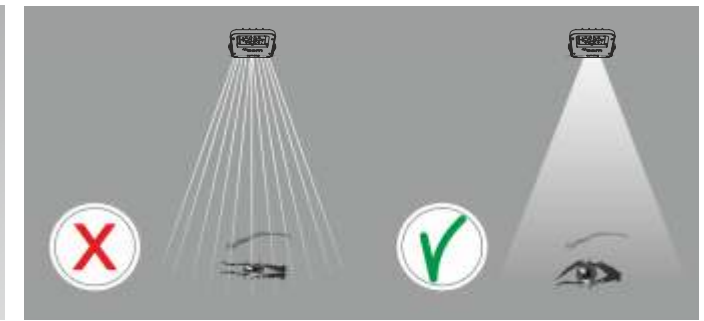
LED Configuration



Efficient Cooling System



Glare-Free Optic Lens Design For Visual Comfort



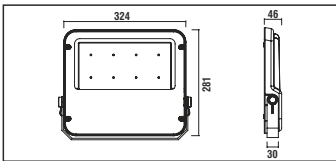
Optional





Icon Midi CL5535

Die-Cast Aluminium Housing



Description

Features

- Dustproof and jetproof to IP66.
- Quick, easy and safe installation.
- Design patent from TPE.
- High quality LED modules from approved international suppliers.
- Thermal-protected, voltage regulated drivers.
- Class I (standard) or class II (optional).
- Low CO₂ emission.
- Choice of any RAL colour on request.
- Standart RAL 7047
- Low service and maintenance costs.
- Maximized energy savings.
- The die -cast aluminium body and high quality materials ensure durability.
- Vandal proof and vibration proof.
- The latest led solution for outdoor lighting.
- The right lighting performance for project requirements.
- Available in three different colour rendering index. CRI > 70 (standard), CRI > 80 (optional) or CRI > 90 (optional).
- Easy connect system provides tool-free electrical connection.
- Effective thermal management.
- More light output and service life.
- High energy saving potential.
- The original aesthetic design.
- Maximum 32 high power white LEDs.
- Available in seven different colour temperatures; 2700K (warm white) 3000K (warm white), 4000K (natural white), 5000K (cool white), 5700K (cool white), 6000K (cool white), 6500K (cool white)
- Good lighting uniformity.
- Mercury free.
- Sharp profile.
- Fully complies RoHS requirements.
- Recyclable ♻️ raw materials.

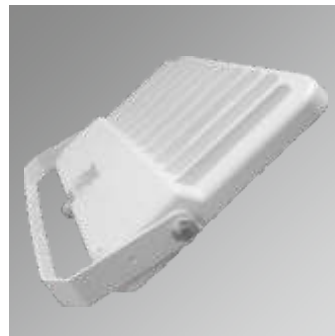
- Driver features;
- Constant current.
 - Harmonic filter protection.
 - Short circuit protection and thermal protection integration.

Materials

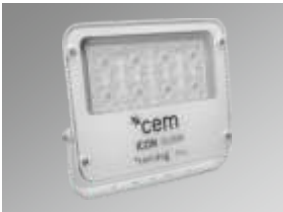
- Canopy; polyester powder painted non-corrosive high-pressure die-cast aluminium.
- Refractor; tempered 5mm flat glass, easy replaceable.
- Gasket; silicon.
- Bolt and nuts; stainless steel.

Applications

- Sport facilities
- Car parks
- Parks
- Industrial areas
- Gymnasiums
- Seaports
- Stadium stands
- Architectural areas
- Security
- Arenas
- Building facades
- Shipyards
- Construction site
- General floodlighting



Icon Midi CL5535 LED Die-Cast Aluminium Housing



Floodlights LED Icon Midi CL5535 Die-Cast Aluminium Housing

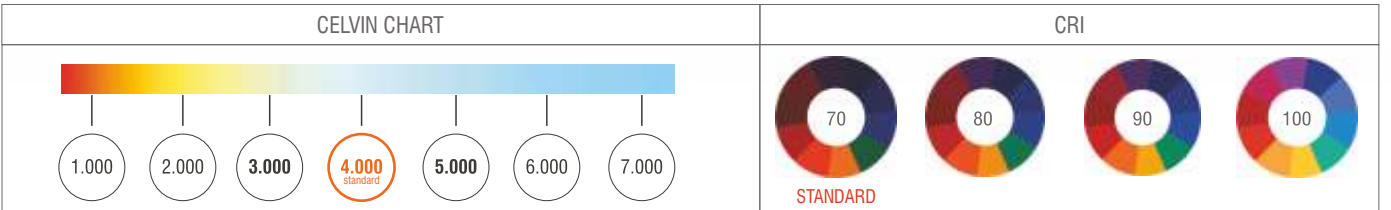
IP66 / IK10 / 4000K (Standard) / RAL 7047 / CL1. Class 1 (Standard) / CRI>70 (Standard)

	W (mm)	L (mm)	h (mm)	Item /Box	Average Weight (kg)	Order Code
32/~72W/ 700mA	324	281	46	1	4.00	L5535-LED072NW-ECG
32/~82W/ 800mA	324	281	46	1	4.00	L5535-LED082NW-ECG
32/~100W/ 925mA	324	281	46	1	4.00	L5535-LED100NW-ECG
32/~110W/ 1050mA	324	281	46	1	4.00	L5535-LED110NW-ECG

Option Code			
-RO.RAL 7021 (Metalic)	-CW. Colour Temperature 6500K	-CR7. CRI>70 (Standard)	-COL.1550 (Standard)
-RO.RAL 7047 (Standard)	-CW. Colour Temperature 6000K	-CR8. CRI>80 (Optional)	-EX. Atex (Optional)
-RO.RAL 9007	-CW. Colour Temperature 5700K	-CR9. CRI>90 (Optional)	
-DIM.0-10V or 1-10V Dimmable Electronic Driver	-CW. Colour Temperature 5000K	-CL1. Class 1 (Standard)	
-ONE. Stand Alone Automation	-NW. Colour Temperature 4000K (Standard)	-CL2. Class 2 (Optional)	
-DAL. DALI Electronic Driver	-WW. Colour Temperature 3000K	-EG. Eco Gold Lumen Package (Standard)	
-IoT. Internet of Things Automation	-WW. Colour Temperature 2700K	-PP. Performance Platinum Lumen Package (Optional)	

According to your preference, please add the **Option Code** at the end of the **Order Code**. Lumens are minimum 115 lm/W maximum 145 lm/W depends on currents and LED quantities.

Standard lens is COL1550. According to your preference, please add the **Optional Lens Code** at the end of the **Order Code**. To see other lens options please see COL options page



LED Configuration

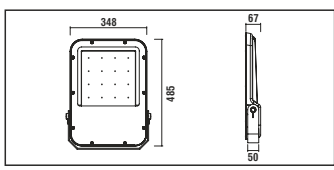
32 LED Version

Efficient Cooling System

Glare-Free Optic Lens Design For Visual Comfort

Optional

Description



IK 10
Shock Resistance

IP 66

Optional
Ex
ZONE 2

Features

- Dustproof and jetproof to IP66.
- Quick, easy and safe installation.
- Design patent from TPE.
- High quality LED modules from approved international suppliers.
- Thermal-protected, voltage regulated drivers.
- Class I (standard) or class II (optional).
- Low CO₂ emission.
- Choice of any RAL colour on request.
- Standart RAL 7047
- Low service and maintenance costs.
- Maximized energy savings.
- The die -cast aluminium body and high quality materials ensure durability.
- Vandal proof and vibration proof.
- The latest led solution for outdoor lighting.
- The right lighting performance for project requirements.
- Available in three different colour rendering index. CRI>70(standard), CRI>80(optional) or CRI>90(optional).
- Easy connect system provides tool-free electrical connection.
- Effective thermal management.
- More light output and service life.
- High energy saving potential.
- The original aesthetic design.
- Maximum 64 high power white LEDs.
- Available in seven different colour temperatures; 2700K (warm white), 3000K (warm white), 4000K (natural white), 5000K (cool white), 5700K (cool white), 6000K (cool white), 6500K (cool white)
- Good lighting uniformity.
- Mercury free.
- Sharp profile.
- Fully complies RoHS requirements.
- Recyclable ♻️ raw materials.

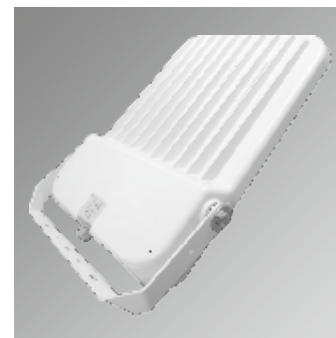
- Driver features;
- Constant current.
 - Harmonic filter protection.
 - Short circuit protection and thermal protection integration.

Materials

- Canopy; polyester powder painted non-corrosive high-pressure die-cast aluminium.
- Refractor; tempered 5mm flat glass, easy replacable.
- Gasket; silicon.
- Bolt and nuts; stainless steel.

Applications

- Sport facilities
- Car parks
- Parks
- Industrial areas
- Gymnasiums
- Seaports
- Stadium stands
- Architectural areas
- Security
- Arenas
- Building facades
- Shipyards
- Construction site
- General floodlighting



Icon Maxi CL5555 LED Die-Cast Aluminium Housing



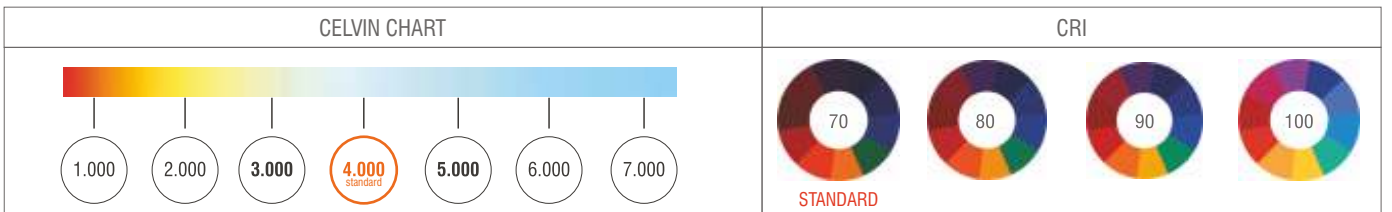
Floodlights LED Icon Maxi CL5555 Die-Cast Aluminium Housing IP66 / IK10 / 4000K (Standard) / RAL 7047 / CL1. Class 1 (Standard) / CRI>70 (Standard)

	W (mm)	L (mm)	h (mm)	Item /Box	Average Weight (kg)	Order Code
64/~125W/ 600mA	348	485	67	1	7.80	L5555-LED125NW-ECG
64/~150W/ 700mA	348	485	67	1	7.80	L5555-LED150NW-ECG
64/~175W/ 800mA	348	485	67	1	7.80	L5555-LED175NW-ECG
64/~200W/ 925mA	348	485	67	1	7.80	L5555-LED200NW-ECG
64/~220W/ 1050mA	348	485	67	1	7.80	L5555-LED220NW-ECG

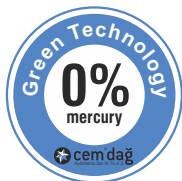
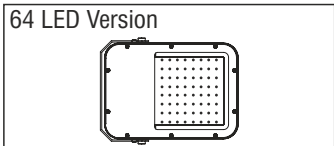
Option Code			
-RO. RAL 7021 (Metalic)	-CW. Colour Temperature 6500K	-CR7. CRI>70 (Standard)	-COL.1550 (Standard)
-RO. RAL 7047 (Standard)	-CW. Colour Temperature 6000K	-CR8. CRI>80 (Optional)	-EX.Atex (Optional)
-RO. RAL 9007	-CW. Colour Temperature 5700K	-CR9. CRI>90 (Optional)	
-DIM.0-10V or 1-10V Dimmable Electronic Driver	-CW. Colour Temperature 5000K	-CL1. Class 1 (Standard)	
-ONE. Stand Alone Automation	-NW. Colour Temperature 4000K (Standard)	-CL2. Class 2 (Optional)	
-DAL. DALI Electronic Driver	-WW. Colour Temperature 3000K	-EG. Eco Gold Lumen Package (Standard)	
-IoT. Internet of Things Automation	-WW. Colour Temperature 2700K	-PP. Performance Platinum Lumen Package (Optional)	

According to your preference, please add the **Option Code** at the end of the **Order Code**
Lumens are minimum 115 lm/W maximum 145 lm/W depends on currents and LED quantities.

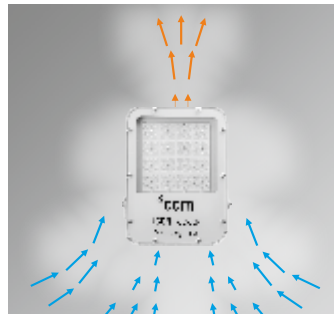
Standard lens is COL1550. According to your preference, please add the **Optional Lens Code** at the end of the **Order Code**. To see other lens options please see COL options page



LED Configuration



Efficient Cooling System



Glare-Free Optic Lens Design For Visual Comfort





Icon Major CL5575

Die-Cast Aluminium Housing



Description

Features

- Dustproof and jetproof to IP66.
- Quick, easy and safe installation.
- Design patent from TPE.
- High quality LED modules from approved international suppliers.
- Thermal-protected, voltage regulated drivers.
- Class I (standard) or class II (optional).
- Low CO₂ emission.
- Choice of any RAL colour on request.
- Standart RAL 7047
- Low service and maintenance costs.
- Maximized energy savings.
- The die - cast aluminium body and high quality materials ensure durability.
- Vandal proof and vibration proof.
- The latest led solution for outdoor lighting.
- The right lighting performance for project requirements.
- Available in three different colour rendering index. CRI > 70 (standard), CRI > 80 (optional) or CRI > 90 (optional).
- Easy connect system provides tool-free electrical connection.
- Effective thermal management.
- More light output and service life.
- High energy saving potential.
- The original aesthetic design.
- Max. 128 high power white LEDs.
- Available in seven different colour temperatures; 2700K (warm white) 3000K (warm white), 4000K (natural white), 5000K (cool white), 5700K (cool white), 6000K (cool white), 6500K (cool white). 4000K (natural white), 5000K (cool white)
- Good lighting uniformity.
- Mercury free.
- Sharp profile.
- Fully complies RoHS requirements.
- Recyclable raw materials.

- Driver features;
- Constant current.
 - Harmonic filter protection.
 - Short circuit protection and thermal protection integration.

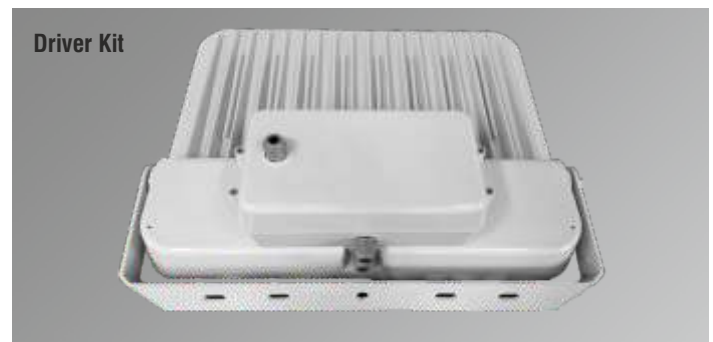
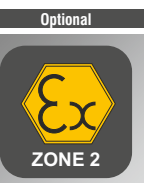
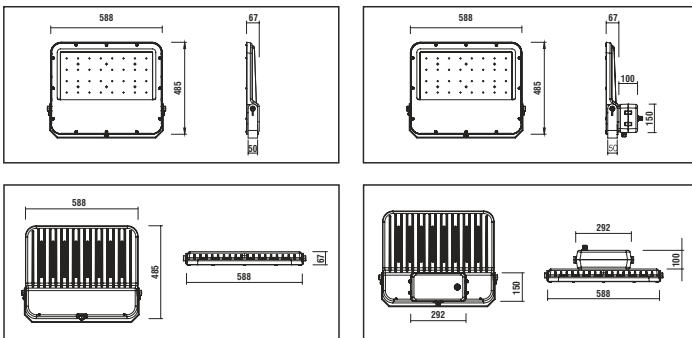
Materials

- Canopy; polyester powder painted non-corrosive high-pressure die-cast aluminium.
- Refractor; tempered 5mm flat glass, easy replaceable.
- Gasket; silicon.
- Bolt and nuts; stainless steel.

Applications

- Sport facilities
- Car parks
- Parks
- Industrial areas
- Gymnasiums
- Seaports
- Stadium stands
- Architectural areas
- Security
- Arenas
- Building facades
- Shipyards
- Construction site
- General floodlighting

Driver Kit



LED Icon Major CL5575 Die-Cast Aluminium Housing



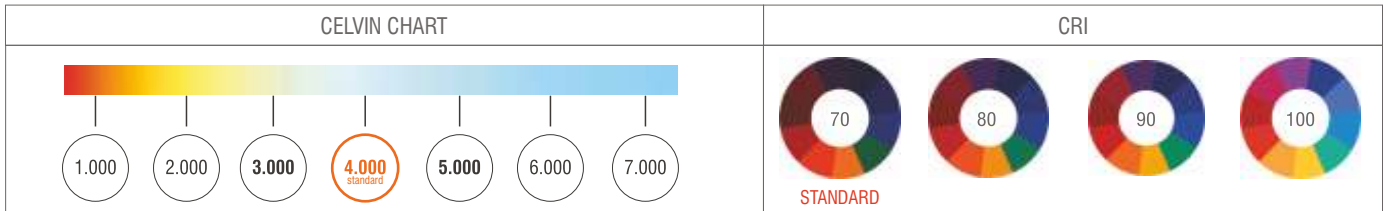
Floodlights LED Icon Major CL5575 Die-Cast Aluminium Housing IP66 / IK10 / 4000K (Standard) / RAL 7047 / CL1. Class 1 (Standard) / CRI>70 (Standard)

	W (mm)	L (mm)	h (mm)	Item /Box	Average Weight (kg)	Order Code
128 LED/300W/700mA	588	485	67	1	13.80	L5575-LED300NW-ECG
128 LED/320W/800mA	588	485	67	1	13.80	L5575-LED320NW-ECG
128 LED/400W/925mA	588	485	67	1	13.80	L5575-LED400NW-ECG
128 LED/430W/1050mA	588	485	67	1	13.80	L5575-LED430NW-ECG
128 LED/500W/1200mA	588	485	67	1	13.80	L5575-LED500NW-ECG

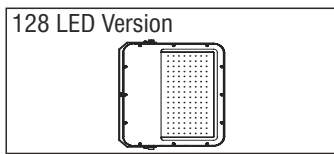
Option Code			
-RO.RAL 7021 Metallic	-CW. Colour Temperature 6500K	-CR7. CRI>70 (Standard)	-COL.1550 (Standard)
-RO.RAL 7047 (Standard)	-CW. Colour Temperature 6000K	-CR8. CRI>80 (Optional)	-EX. Atex (Optional)
-RO.RAL 9007	-CW. Colour Temperature 5700K	-CR9. CRI>90 (Optional)	
-DIM.0-10V or 1-10V Dimmable Electronic Driver	-CW. Colour Temperature 5000K	-CL1. Class 1 (Standard)	
-ONE. Stand Alone Automation	-NW. Colour Temperature 4000K (Standard)	-CL2. Class 2 (Optional)	
-DAL. DALI Electronic Driver	-WW. Colour Temperature 3000K	-EG. Eco Gold Lumen Package (Standard)	
-IoT. Internet of Things Automation	-WW. Colour Temperature 2700K	-PP. Performance Platinum Lumen Package (Optional)	

According to your preference, please add the **Option Code** at the end of the **Order Code**
Lumens are minimum 115 lm/W maximum 145 lm/W depends on currents and LED quantities.

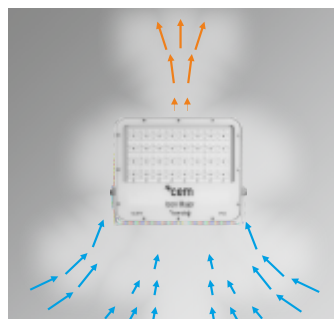
Standard lens is COL1550. According to your preference, please add the **Optional Lens Code** at the end of the **Order Code**. To see other lens options please see COL options page



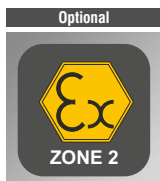
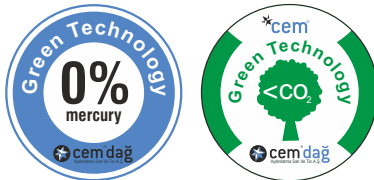
LED Configuration



Efficient Cooling System

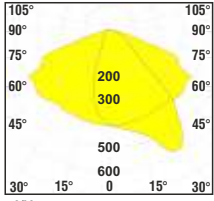


Glare-Free Optic Lens Design For Visual Comfort



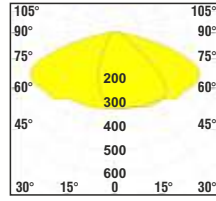
LENS CODES OPTIONS

COL1010



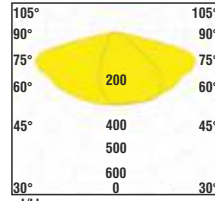
cd/klm
—C0-C180 —C90-C270

COL1020



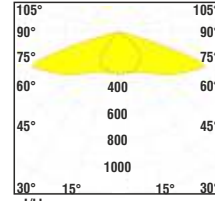
cd/klm
—C0-C180 —C90-C270

COL1030



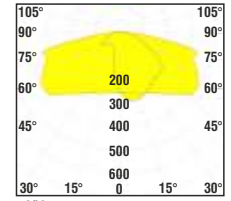
cd/klm
—C0-C180 —C90-C270

COL1040



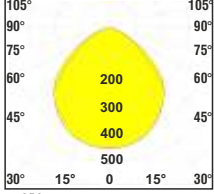
cd/klm
—C0-C180 —C90-C270

COL1650



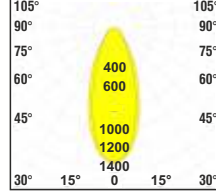
cd/klm
—C0-C180 —C90-C270

COL1530



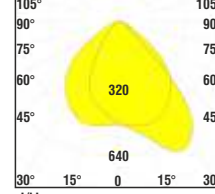
cd/klm
—C0-C180 —C90-C270

COL1540



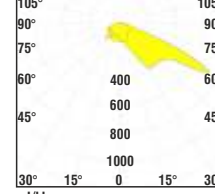
cd/klm
—C0-C180 —C90-C270

COL1550



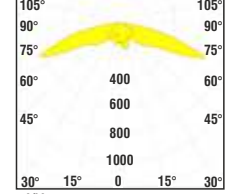
cd/klm
—C0-C180 —C90-C270

COL1630



cd/klm
—C0-C180 —C90-C270

COL1660



cd/klm
—C0-C180 —C90-C270

LED Tablet Extra Series

*3 optional power in same luminaire
(28W/ 32W/ 36W)*

*With acrylic material
ending yellowing diffuser*

*With unique micron LED technology
Homogeneous light output*

Compatible with ceiling system
Lay-in Ceiling
Recessed Ceiling
Clip-in Ceiling

Effective inventory management

LED Tablet Extra
CL9090





LED Tablet Extra CL9090

Recessed Opal Diffuser



Description

Features

- Trendsetter design.
- General purpose SMD LED luminaires.
- Special designed opal diffuser (PMMA) with framing.
- SMD LED
- IP40 protection class.
- Suspension system for diffuser.
- Choice of colour temperatures on request.
- Opal diffuser options for architectural and aesthetic designs.
- Fully complies with RoHS requirements.
- Recyclable ♻️ raw materials.

Materials

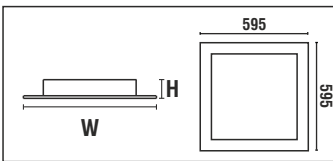
- Canopy; electrostatic RAL9016 powder painted aluminium housing.
- Diffuser; acrylic (PMMA)

Applications

- Offices
- Shops
- Hotels
- Restaurants
- Meeting rooms
- Cafeterias
- Shopping malls
- Education fields
- Healthcare fields
- Kitchens
- Terminals
- Schools

Technical Data

- 220-240V AC 50/60 Hz ECG
- Dimensions: 595x595x90mm
- Standards
- CE, RoHS, EN60598-2-2



Standard



Protection Gloves



Product Information					Order Code
Number of Power LEDs/ Rating	L (mm)	W (mm)	h (mm)	Weight (kg)	Electronic Driver
25W	595	595	90	3.30	L9090-LED025-ECG
28W/32W/36W	595	595	90	3.30	L9090-LED03P-ECG
Option Code	-CW. Colour Temperature 5700K -CW. Colour Temperature 5000K -NW. Colour Temperature 4000K (Standart) -WW. Colour Temperature 3000K -CW. Colour Temperature 6500K -T1. T15,T25 Lay-In Ceiling (Standard) -T2. Recessed Ceiling Installation Tools -T3. Clip-In Ceiling -EL1. Emergency Kit 1 Hour Battery -EL3. Emergency Kit 3 Hours Battery For other lamp type/power lighting diagram please refer to our website. -Compatible with lighting automation and control systems, for detailed information please refer to our website. According to your preference, please add the Option Code at the end of the Order Code				